

# SLUDGE MASTER®

HEAVY DUTY PLUNGER PUMPS

## PE SERIES

### PUMP MODELS

PE 1141 Simplex

PE 1142 Duplex

PE 1143 Triplex

PE 1144 Quadruplex

### FEATURES

TRANSFER UP TO 495  
GPM

160,000 PSI STRENGTH  
SHAFTS

REPLACEABLE BRONZE  
INSERT

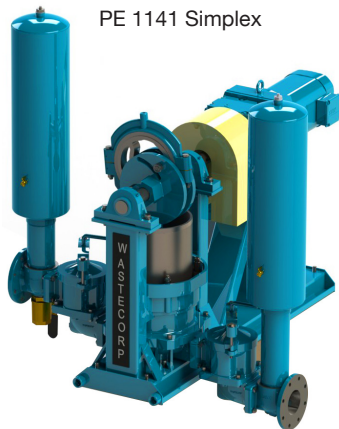
LOWER COST PARTS

LEAK RESISTANT DESIGN

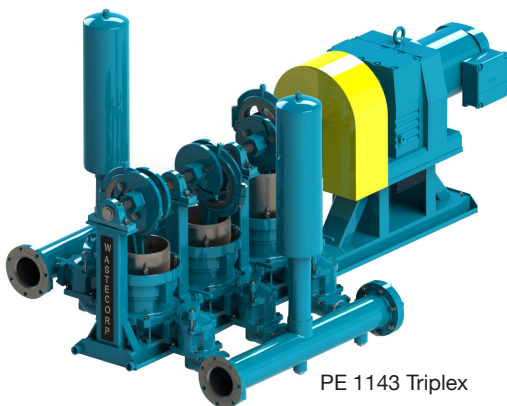
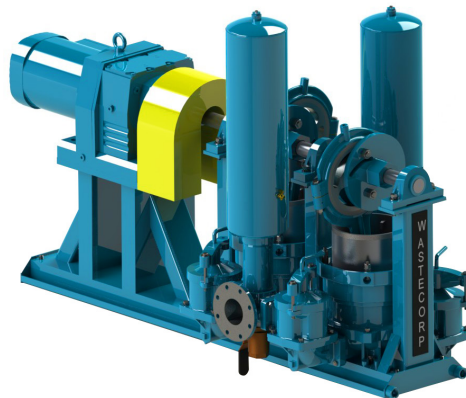
PLUNGER PAC™  
STANDARD

**WASTECORP.COM**

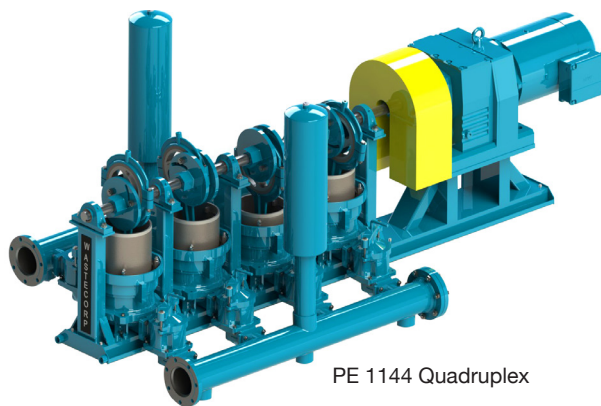
PE 1141 Simplex



PE 1142 Duplex



PE 1143 Triplex



PE 1144 Quadruplex

## YOUR SLUDGE PROCESSING SOLUTION

Primary sewage pumping can be a tough task at wastewater treatment plants. But facilities that use Wastecorp Plunger pumps know that it doesn't have to be a headache. Wastecorp's PE-9 Series plunger pumps are available in simplex through quadruplex pump styles. These pumps are capable of capacities up to 495 GPM against head levels up to 85 feet on a continuous duty basis.

These plunger pumps are an ideal replacement for rotary lobe double disc pumps and progressive cavity pumps because the piping arrangements are similar and the plunger pump requires less maintenance.

General Specifications	Simplex PE 1141	Duplex PE 1142	Triplex PE 1143	Quadruplex PE 1144
Number of plungers	1	2	3	4
Plunger dia. (in)	11	11	11	11
Air chambers	(1) 9"x30"	(2) 9"x30"	(3) 9"x30"	(4) 9"x30"
Flanged connections	4" ANSI 125 #	4" ANSI 125 #	6" ANSI 150 #	6" ANSI 150 #
Number of pin positions	11			
RPM Speeds	50			
Max. stroke length (in)	6.56			
Max. rec. suction lift (ft)	20			
Max. total head (ft)	115	115	115	85
Max. capacity (GPM)	136	247	371	495
Eccentric dia. (in)	10			
Shaft tensile strength (PSI)	160,000			
Approx. weight less driver (lbs)	1250	2000	2800	3600

Pump Component	Standard Material	Optional Material
MAINSHAFT	A4140/4142 High-Strength Alloy Steel	
ECCENTRIC	ASTM A48, Class 35 Grey Iron	
LUBRICATION	Manual Sight Feed Oiler, 5 oz	a) Automatic ball-type oiler with needle valve (5 oz), b) Electric Solenoid Oiler, c) Mechanical Force Feed Lubricator
DRIVEN/DRIVE FLANGES	ASTM A48, Class 35 Grey Iron	
AIR CHAMBER	A53 Seamless Steel Pipe, Anodized/Galvanized with ¼" brass air release valve/petcock	304 or 316 Stainless Steel
SHEAR PIN	Fabricated Cold Rolled Steel	
CONNECTING ROD	ASTM A536 Grade 65-45-12 Ductile Iron	
ECCENTRIC BEARING LINER	Replaceable, Bronze SAE 660	
BUSHING, WRIST PIN	SAE 941 Oil-Lite Bronze	
WRIST PIN	A4140/4142 High-Strength Alloy Steel	
VALVE SEAT	ASTM A48, Class 35 Grey Iron	Bronze Alloy, 316 Stainless Steel
BALL VALVE	5-1/8" Urethane Rubber with Centralized Iron Core	
PLUNGER	ASTM A48, Class 35 Grey Iron	
PUMP BODY	ASTM A536 Grade 65-45-12 Ductile Iron	Coatings Available: a) Chrome Oxide, b) Aluminum Oxide, c) Tungsten Carbide, d) Hastelloy C, e) Stainless Steel
STUFFING BOX	ASTM A536 Grade 65-45-12 Ductile Iron	
GLAND	ASTM A48, Class 35 Grey Iron	
FLANGE CONNECTION	4" ANSI 125 lb (Simplex and Duplex Pumps)	
PACKING	½" sq. Kevlar Braided with Poly-urethane seal	a) Graphite Rings Only, b) Chevron Rings Only, c) Combo (Graphite/Chevron), d) Plunger Pac (Chevron, Teflon and Poly-urethane seal)
PUMP BASE	Fabricated heavy-duty steel channel and tube base plate and pedestals with drip gutters and 1" drain connections	Floor Base Frame
DRIVE ARRANGEMENT	Electric Constant Speed, Vertical Gear Reducer coupled to pump's mainshaft, Max. Output Speed: 50 RPM	

**PERFORMANCE CURVES**

**WASTECORP.**

Plunger Pumps

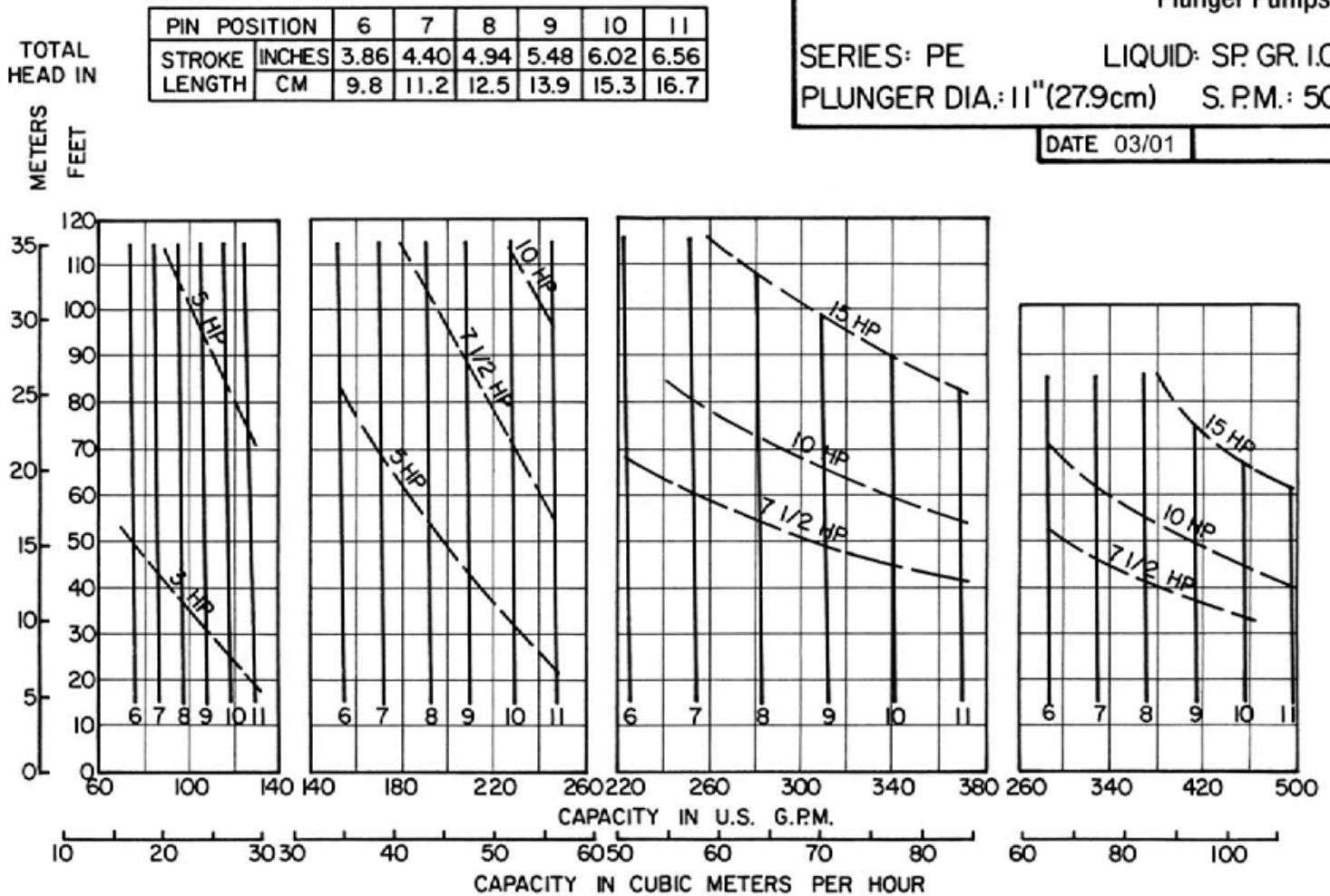
SERIES: PE

LIQUID: SP. GR. 1.0

PLUNGER DIA.: 11" (27.9cm)

S.P.M.: 50

DATE 03/01



PE 1141 Simplex

PE 1142 Duplex

PE 1143 Triplex

PE 1144 Quadruplex

# SLUDGE MASTER®

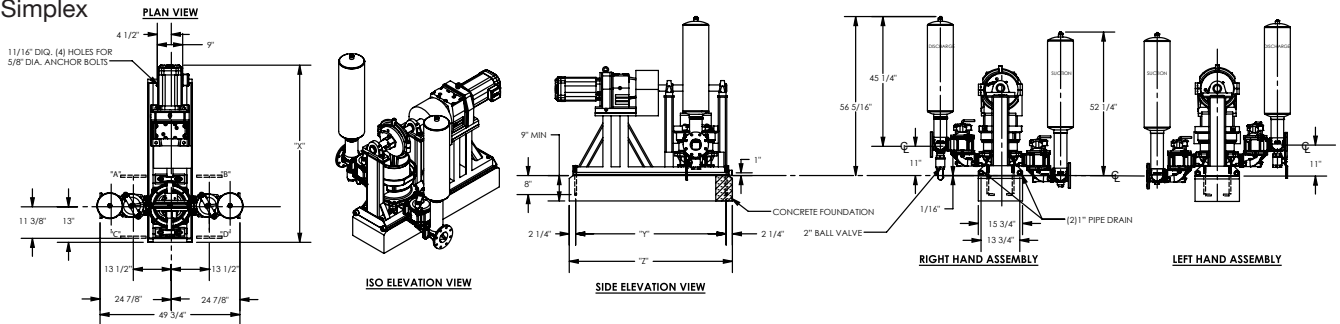
HEAVY DUTY PLUNGER PUMPS

## PE SERIES

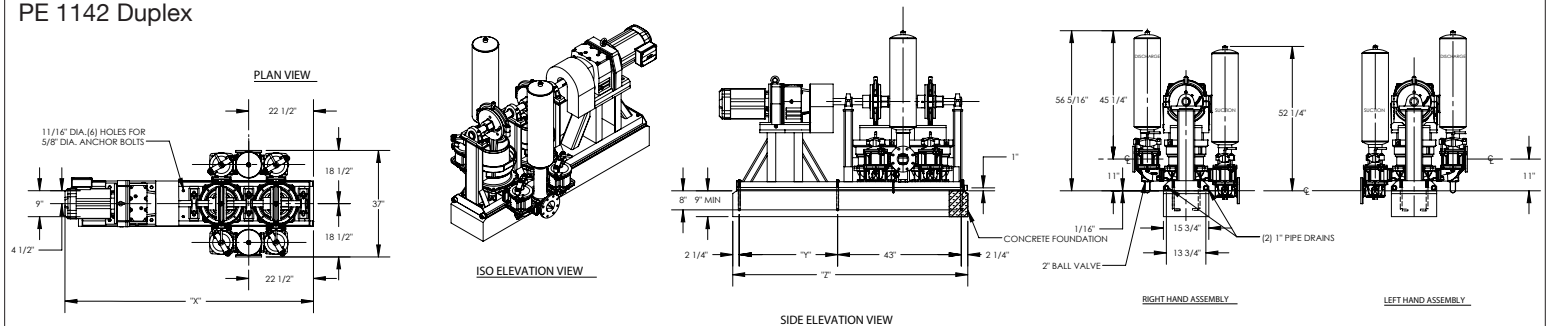


### DIMENSIONAL DRAWINGS

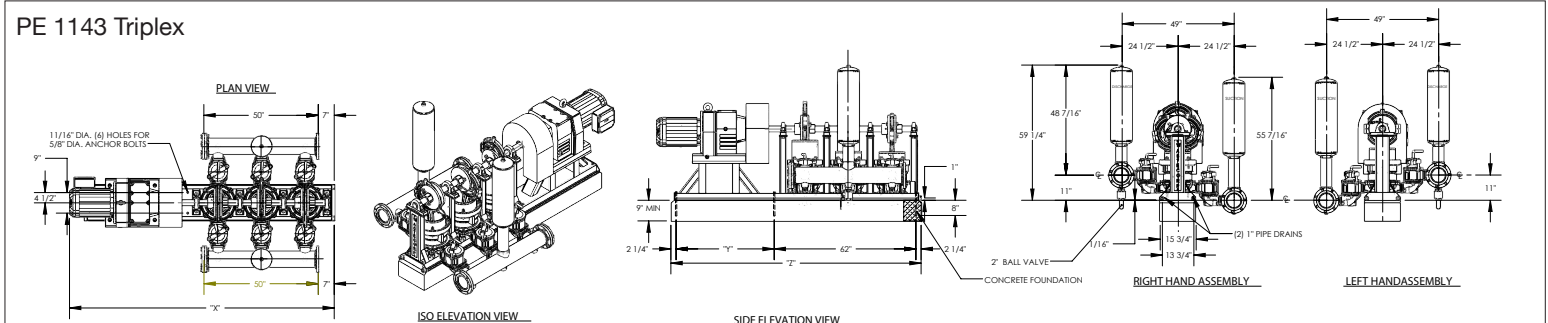
PE 1141 Simplex



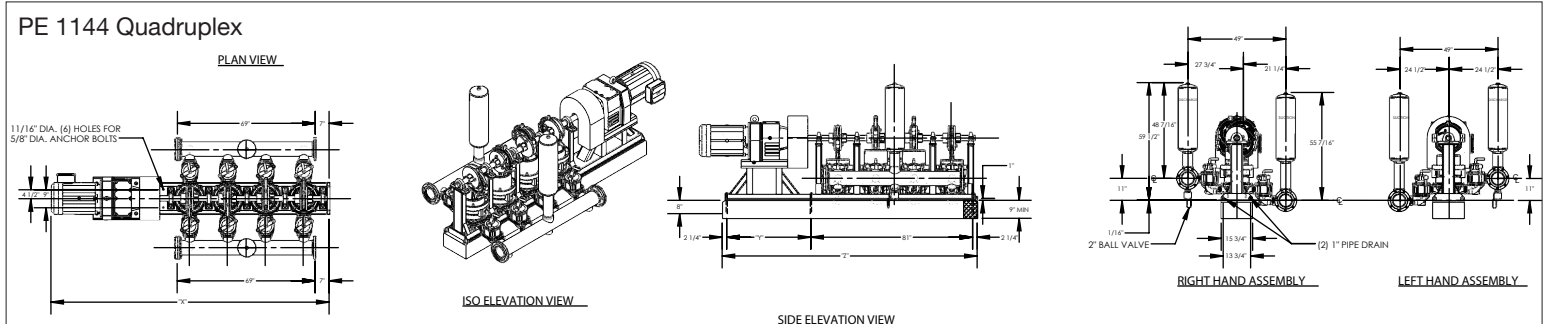
PE 1142 Duplex



PE 1143 Triplex



PE 1144 Quadruplex



Wastecorp Pumps USA  
P.O. Box 70  
Grand Island, New York 14072 | USA  
Tel: 888.829.2783 | Fax: 888-883-3320  
sales@wastecorp.com

Wastecorp Pumps Inc.  
50 Shorncliffe Road  
Toronto, Ontario M8Z 5K1 | Canada  
Tel: 416.233.3000 | Fax: 416.233.2300  
info@wastecorp.com