

**Mud Sucker®
Diaphragm Pumps
2B-DD Series**

**Solids Handling
Diaphragm Pumps**

2B-EC-DD™

Electric

2B-M-DD™

Engine Driven

FEATURES

Available with a 1½" or 2" connection

Solids handling up to 1½"

Exclusive Wastecorp design

Few moving parts for low cost of ownership

Specialty drive systems available (air driven, hydraulic)

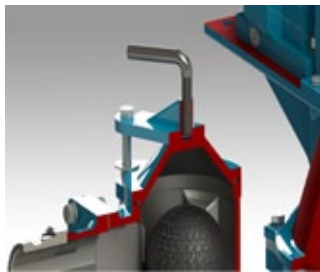
PROFESSIONAL



PROFESSIONAL PUMPING PERFORMANCE FROM START TO FINISH.

The Mud Sucker 2B-DD Professional Double Diaphragm Pump Series is an ideal fit for over 500 solids handling applications from food processing, general wastewater and waste oils. Plus, with our available Fluoropolymer and Xylan coatings you can get a food safe transfer pump or corrosion resistant internals for hassle-free pumping. You also have custom choices for piping configurations and drive options.

Professional Diaphragm Pumps for Solids Handling Applications.



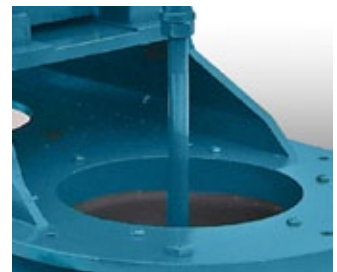
PROFESSIONAL PUMP DESIGN & ENGINEERING

Solids and slurry get crushed and transferred through the innovative dual valve chamber system.



PREMIUM COMPONENTS

Heavy duty shaft and crank are designed for heavy use applications and long life cycles.



LIGHT WEIGHT PUMP BODY

The Patented Mud-sucker design includes a marine grade aluminum pump body and velocity channel to enhance fluid transfer.

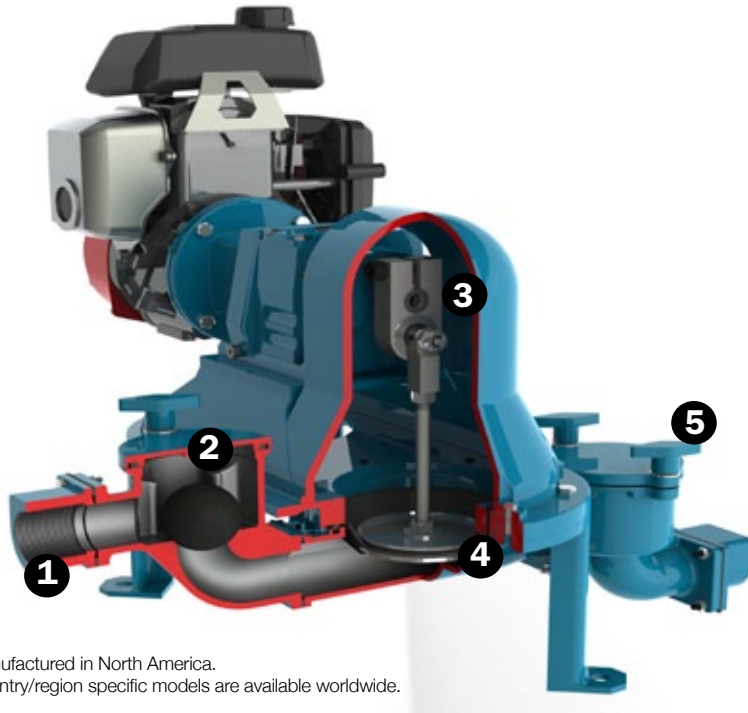
WHAT THIS MEANS TO YOU.

Solids move through the pump more easily making your pump efficient and productive.

You get what you pay for with the 2B-DD Series, unlike throw away makes that cost good money but simply don't last.

Maneuver your 2B Series around your job site easily with lighter weight components

How The Mud Sucker 2B-DD Series Works



Manufactured in North America.
Country/region specific models are available worldwide.

Performance Range

Max. capacity	40 GPM
Max. suction lift	20' vertical or 75" horizontal
Max. discharge head	50' vertical or 300' horizontal
Solids handling	1½" dia or 50% by volume

Pump Specifications

Suction inlet/outlet size	1.5" or 2"
Max. liquid temperature	140°F (60°C) continuous
Pump body casing	Aluminum (ASTM A356, Class 30)
RPM speed of diaphragm	61
Diaphragm (x2)	7" dia. fabric reinforced Buna-N
Ball valves	2"
Gearbox	SEW Eurodrive or Siemens - cast iron housing with heat treated gears
Hardware	Stainless steel 316
Rod end bearing body	Carbon steel, protective coated for corrosion resistance
Ball bearing	Sintered steel, heat treated, oil impregnated
Ultimate radial static load capacity	9,000 Lbs

Motor Specifications

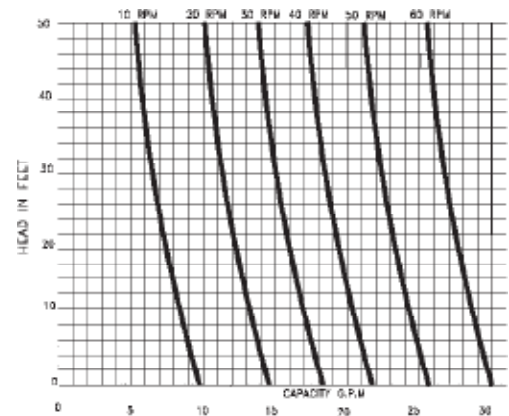
(Select One)

Electric (single phase)	2HP; 1Ph; 60Hz; 115/208-230V; 1800RPM TEFC
Electric (three phase)	2HP; 3Ph; 60Hz; 230-460V [or 360-575V]; 1800RPM
Electric (DC)	2HP; 180V; 1800RPM DC Permanent Magnet TEFC
Explosion Proof	2HP; 3Ph; 60Hz; 230-460V [or 360-575V]; 1800RPM
Pneumatic	2.4HP @ 80psi, Speed: 1800RPM, Air Consumption 75 CFM (Free Air) 4-Vane
Hydraulic	Parker /60RPM/ 500 PSI - 13 GPM
Gas	5.5HP; 3600RPM; Electric Start/Honda GX 160
Diesel	4.6HP; 3600RPM/Hatz Diesel

Professional Solids Handling Diaphragm Pumps

- 1** 1.5" or 2" inlet sucks in maximum spherical solids of 1.5".
- 2** Suction valve chamber crushes all kinds of debris laden waste or makes slurry more manageable.
- 3** Pump rod and crank arm ensures consistent flow and performance.
- 4** High performance diaphragms handle all sorts of fluids including waste oil, mining waste, coal slurry, raw sewage, food processing waste and more.
- 5** The discharge valve chamber sends slurry and solids on their way with added solids crushing performance.

Performance Curve




WASTECORP.
Pumps®

OEM Manufacturer

E-mail: info@wastecorp.com Toll-Free: 1.888.829.2783

The pump depictions are not meant to be used or relied upon as a substitute for the safety and use information that is published in the respective operator's manual. Before operating your diaphragm pump, read, understand and follow all instructions in the manual and on the pump. Specifications and programs are subject to change without notice. Images may not reflect dealer inventory and/or unit specifications. Wastecorp, Mud Sucker and globes are trademarks of Wastecorp, WPCI Environmental Brands. No reproduction of this document without permission. © Wastecorp.