

Mud Sucker®
Diaphragm Pumps

3FA-EC Series

Heavy Duty
Diaphragm Pumps

3FA-EC™
3FA-EC-C™

FEATURES

3" Connection size

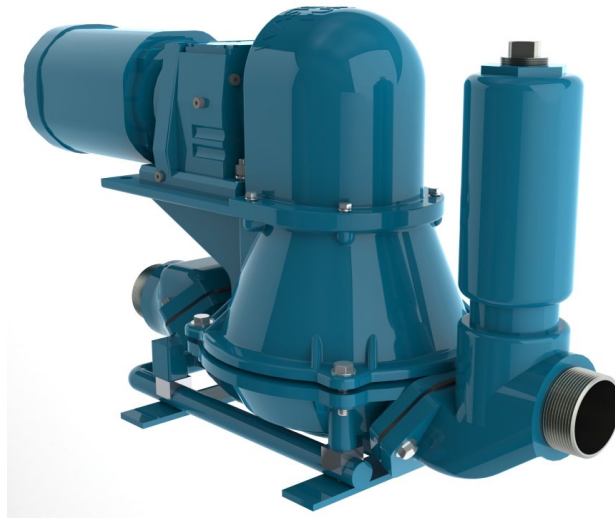
Pump up to 80 GPM

Transfer spherical solids up to
2 1/4" or 50% by volume

Pump up to 50' vertical or 300'
horizontal

13" heavy duty diaphragm

Multiple drive options and
industry specific components

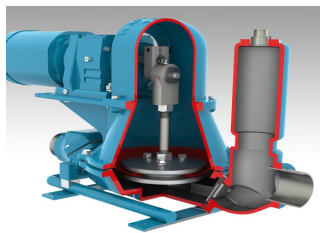



WASTECORP.
Pumps®

Use Less Energy. Pump More Productively. The 3FA™ Series Can Help You Do It.

When food processors, oil companies, pulp and paper mills and farms challenged us to design a heavy duty 3" diaphragm pump that could adapt to the changing demands of their industries, Wastecorp engineered the new Mud Sucker® 3FA Series. We developed the exclusive **Contoured Velocity Channel** which aids in moving tough fluids through the pump body and enhancing overall performance. We worked with leading chemical companies to offer high wear components like Santoprene® diaphragms and fabric reinforced flapper valves. This helps to move tough fluids while reducing downtime for maintenance. With every innovation, we move diaphragm pump technology forward because our customers demand it.

Make Pumping Tough Fluids Easier



EXCLUSIVE CONTOURED VELOCITY CHANNEL

Only with Mud Sucker pumps do you get an industry exclusive velocity channel that enhance the flow of fluids and reduces the chance for clogging

MULTIPLE DRIVE OPTIONS

We understand the needs of your industry. That's why we offer several high performance drives from the industry's leading manufacturers including Siemens, SEW, Baldor and more

CONFIGURED FOR YOUR FACILITY

With custom mounting systems available and your choice of in-line or standard piping systems, you get a pump designed for your facility.

WHAT THIS MEANS TO YOU.

The pump adapts to your unique fluid handling environment. Experience increased productivity and less downtime.

Get the explosion proof, variable speed, single or three phase drive that works best for you.

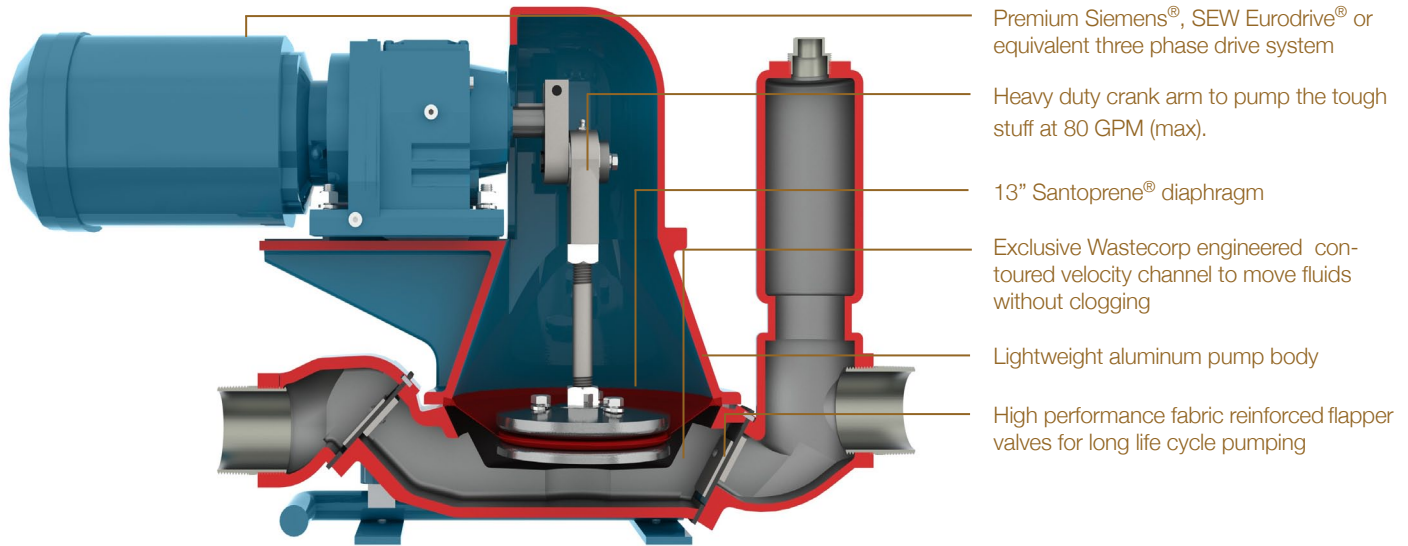
Get solutions for tight spaces, piping arrangements and industry specific components that you need to get the job done right the first time.

MUD SUCKER® DIAPHRAGM PUMPS THE PUMP WITH ATTITUDE.

wastecorp.com

Santoprene is a registered trademark of ExxonMobil Corporation.

Mud Sucker® Diaphragm Pumps



Premium Siemens®, SEW Eurodrive® or equivalent three phase drive system

Heavy duty crank arm to pump the tough stuff at 80 GPM (max).

13" Santoprene® diaphragm

Exclusive Wastecorp engineered contoured velocity channel to move fluids without clogging

Lightweight aluminum pump body

High performance fabric reinforced flapper valves for long life cycle pumping

Mud Sucker 3FA Series is manufactured in North America. Country/region specific models are available worldwide.

Performance Range

Max. capacity	80 GPM
Max. suction lift	25' vertical or 75' horizontal
Max. discharge head	50' vertical or 300' horizontal
Solids handling	2.250" dia or 50% by volume

Pump Specifications

Suction inlet/outlet size	3"x3" (female threaded)
Max. liquid temperature	140 °F (60 °C) continuous*
Pump body casing	Marine grade aluminum (ASTM A356, Class 30)
Diaphragm	13" dia TPE Santoprene® Severe duty
Flapper valves	Fabric reinforced Buna-N (viton optional)
Gearbox	SEW Eurodrive model R57 cast iron with heat treated gears
Hardware	Zinc coated
Rod end bearing body	Cast iron, protective coated for corrosion resistance
Ball bearing	Sintered steel, heat treated, oil impregnated
Ultimate radial static load capacity	9,000 Lbs

Motor Options

Description	Part No.	Motor Option
Standard motor (TEFC)	61640-00	3 hp, 1800RPM/3/60/230-4
Single Phase (TEFC)	61640-10	3 hp, 1800RPM/1/60/115-2
Explosion Proof (Three phase, TEXP)	61640-20	3 hp, 1800RPM/3/60/230-4
Explosion Proof (Single phase), TEXP	61640-30	3 hp, 1800RPM/1/60/115-2

Popular 3FA Series Applications

- Pacified Chemical Sludge
- Lime Slurry
- Waste Oil Sludge
- Fiberboard Filler
- Raw Latex
- Clay Slurries
- Cruise Ship Wastes
- Food Processing Waste (pork, cattle, fish, fruit, vegetable, dairy, poultry)
- Paper Pump Transfer
- Explosive Jelly
- Paint Transfer
- Polymer Transfer
- Ship Bilge Transfer
- Metal Slurry Transfer
- Holding Tank Transfer
- Coal Slurry
- Hog Fat
- Chocolate Waste Product Transfer
- Portable Trash/Clean-up
- Sludge Recovery (tanker mounted units)
- Ferric Chloride
- Mobile Dewatering
- Feed Pump
- Lagoon Cleaning
- Golf Courses
- Harbor Pumps
- Federal/Military
- Railroad Tanker Cleaning
- Thickened Sludge Transfer
- Scum Feed Pumps
- Portable Clean-up Pump Sets
- Centrifuge Feed Pumps
- Lime Slurry Transfer
- Lagoon Dredging
- Septic Transfer
- State/Federal Parks & Recreation
- Emergency Management Response



WASTECORP.
Pumps®

* Consult factory if fluid temperature exceeds 140 °F

OEM Manufacturer

Mud Sucker® Diaphragm Pumps

Toll-Free: 1.888.829.2783 Email: info@wastecorp.com

Mud Sucker 3FA Series pumps are specified for the following industries and applications: agricultural, aquaculture farming, farms, food processing, oil, gas, shale, select chemicals, pulp and paper mills, marine pumping applications, waste oil pumping, landfills, dewatering, biodiesel production and others. Mention your application to your technical support representative at the time of order. Before operating your diaphragm pump, read, understand and follow all instructions in the manual and on the pump. Specifications and programs are accurate at the time of publication but subject to change without notice. Images may not reflect dealer inventory and/or unit specifications. Wastecorp, Mud Sucker and globes are trademarks of Wastecorp, WPCI Environmental Brands. No reproduction of this document without permission. © Wastecorp.

ATTACHMENTS

Enhanced pump out productivity with your Mud Sucker diaphragm pump can be as easy as adding a few simple accessories. So if you need to suck up dirt and debris, need a mess free pump out, or have a heavier duty dewatering application, the right accessories can enhance your fluid handling one step further.

	Part no.	Description		Part no.	Description
	60466-00	Camlock fitting 2" alum. male adapter MNPT		61316-00	Wheel mount kit with handles (In-line)
	62975-00	3-way brass valve w/ aluminum camlocks (discharge only)		62732-00	Wheel mount kit with handles (standard)
	61287-00 61287-10	Basic spare parts kit (diaphragm and flappers)		69999-99	Mobility package (stationary) lifting bars
	61286-00 61286-10	Comprehensive spare parts kit (diaphragm, flappers gaskets, weights and hardware)		61292-00	Professional Wagon kit, 16" pneumatic tires
	61605-00	Air chamber (discharge side). Pulsation dampening		99921-99	Medium duty wagon kit
	60723-00	Non-collapsible EPDM hose 3"x20'. Camlocks included		Various	Wet section coatings for specific applications
	51334-10	Discharge hose, lay flat (brown) 3"x50'. Camlocks included		62304-00	SEW Movimot™ 24V key pad speed control
	31345-00	Stainer, round hole (solids) 3" FNPT		61492-00	Starter Control Panel w/ NEMA 12 protection
	60581-00	Round hole strainer for non-clog performance		61491-00	Transformer start/estop, w/ Nema 12 overload protection
	61245-00	Clear swing check valve 3" FPTx FPT		Various	Waste containment system with tank, hoses, trailer and pump