

**TRASH FLOW®**  
ENGINE DRIVEN TRASH PUMPS  
**TFCC-8M™**

**FEATURES**

TRANSFER UP TO 2700  
GPM (613 M<sup>3</sup>)

MAX. HEAD 168 FT (51 M)

HEAVY DUTY BEARINGS  
AND CASTINGS

EASILY REMOVABLE  
ROTATING ASSEMBLY

VACUUM PRIME ASSIST  
AVAILABLE\*

“SILENT” PUMPING  
MODEL AVAILABLE\*

QUICK SELF PRIMING  
CAPABILITIES

DOUBLE FLOATING  
MECHANICAL SEAL

DUAL LIP SEAL BEARING  
PROTECTION

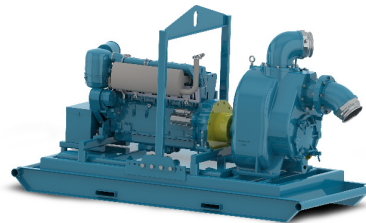
\*optional



**FLAWLESS PERFORMANCE. PROFESSIONAL DURABILITY.**

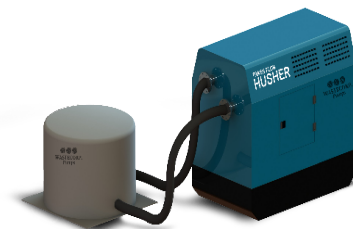
The Wastecorp Trash Flow TFCC-8M engine driven trash pump delivers what no one else can. They have unmatched pumping performance up to 2700 GPM, with a professional trailer or skid frame. With an easy back pullout design, your Trash Flow is also easier to maintain than other makes. Get the power and performance your facility deserves with the new Trash Flow TFCC-8M. Wastecorp is an ISO 9001, ISO 14001 certified pump manufacturer, delivering the quality and environmental responsibility you expect.

**TRASH FLOW® TFCC-8M - OPTIONAL CONFIGURATIONS**



**With or Without Wheels The TFCC-8 Moves Wastewater**

The TFCC-8M is available as a skid mounted model complete with a heavy duty lifting bail to move around your job site. With a wide variety of diesel engine and control panel options available, you'll get exactly what you need for your job.



**Pumping in Residential Areas?  
The Trash Flow Can Quiet Down**

One of the challenges when using a trash pump in residential areas is adhering to local noise regulations. Wastecorp's solution is the Trash Flow Husher with an acoustical hut to keep sound below 70 dBA.



**Intermittent Flow a Problem? “Vacuum Prime Assist” is  
The Solution**

Vacuum prime assist is ideal when pumping fluid with large volumes of air or pulling through long suction lines. It is also environmentally friendly as there is no carryover of liquid into the environment because of the unique float box design.

# TRASH FLOW®

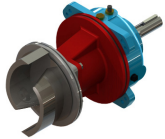
ENGINE DRIVEN TRASH PUMPS

TFCC-8M™



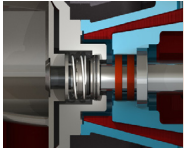
**WASTECORP**  
Pumps®

## FEATURES



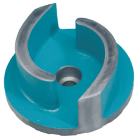
### REMOVABLE ROTATING ASSEMBLY

Experience less downtime and maintenance hassles with the Trash Flow's removable rotating assembly. The pump volute and piping are not disturbed during maintenance.



### DOUBLE FLOATING MECHANICAL SEAL

Wastecorp's mechanical seals are designed for the harsh pumping conditions in today's municipal and industrial solids handling jobs.



### SOLIDS HANDLING IMPELLERS

Trash Flow pumps feature our standard premium two-vane solids handling impellers with solids handling capabilities up to 3" (75mm).



### OPTIONAL SUCTION AND DISCHARGE GAUGES

Monitor operating pressure easily with Wastecorp's optional suction and discharge gauges.

## OPTIONAL CONFIGURATIONS



### SEWAGE LIFT STATIONS

Let our pump designers engineer the ultimate lift station for your facility. We offer complete packaged solutions including control panels, valves and more.



### SOUND-ATTENUATED ENCLOSURES

When your application calls for an enclosure to reduce noise or provide added security, Wastecorp's Husher® models provide noise reduction below 70 dBa and lockable doors.

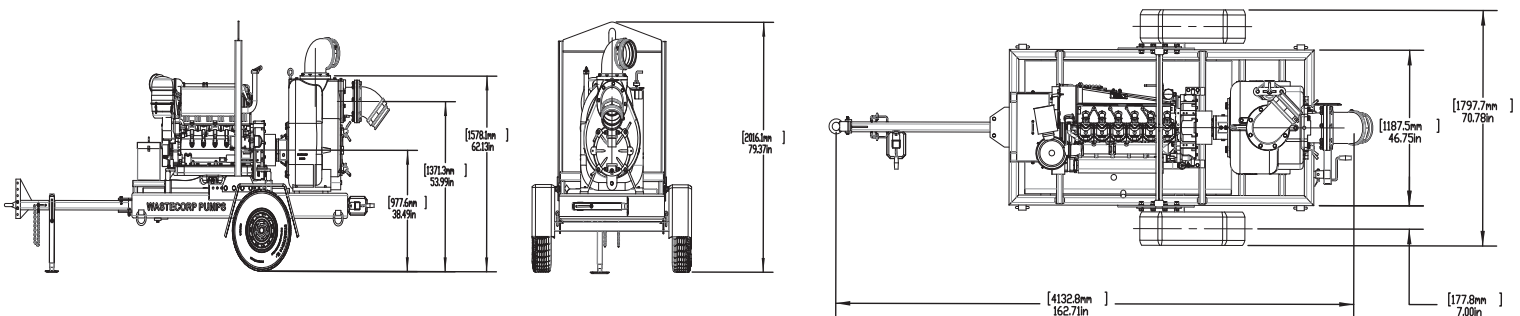
<b>Model</b>	Trash Flow® TFCC-8M
<b>Connection Size</b>	8" x 8" (203mm x 203mm) ANSI/DIN
<b>Max. GPM</b>	2700 GPM
<b>Max. Suction Lift</b>	25 ft (7.52m)
<b>Max. Discharge Head</b>	168 ft (51m)
<b>Max. Liquid Temp.</b>	160°F (71°C)
<b>Pump Casing</b>	Grey Iron, ASTM A48; Class 30
<b>Operating Pressure</b>	Maximum 120 psi (797 kPa)
<b>Impeller</b>	Max. 14.75" OD, Ductile Iron ASTM A536, Grade 60-40-18 (Impeller Trimming: If required) Semi-Open Type, Two-Vane Impeller, (two plane, computer dynamically balanced)
<b>Max. Solids Handling</b>	3"
<b>Impeller Shaft</b>	ANSI 4140 steel
<b>Replaceable Wear Plate</b>	SAE 1020 steel
<b>Removable Cover Plate</b>	Grey Iron, ASTM A48; Class 30
<b>Flapper Valve</b>	Neoprene with internal steel weight
<b>Bearing Housing</b>	Grey Iron, ASTM A48; Class 30 (includes oil sight glass and breather valve)
<b>Seal Plate</b>	Grey Iron, ASTM A48; Class 30
<b>Shaft Sleeve</b>	316 Stainless Steel
<b>Radial/Thrust Bearing</b>	NSK Open Ball
<b>Bearing/Seal Cavity Lubrication</b>	SAE No. 30 Non-Detergent Oil
<b>Gaskets</b>	Buna-N, Compressed Synthetic Fibers, PTFE, Vegetable Fiber, Cork and Rubber
<b>Hardware</b>	Standard Plated Steel, Brass Pressure Relief Valve, Bearing and Seal Cavity Oil Level Sight Gauges
<b>Mechanical Seal</b>	Double floating cartridge type, titanium tungsten-carbide rotating and stationary faces, 316SS casing and spring, Viton O-Rings.

### Trailer Information

<b>Trailer</b>	Single Axle DOT compliant with e-brakes, fenders, lighting, swivel jack, ball hitch or pintle eye coupler
<b>Coupling</b>	SAE Rubber Disk Drive fly-wheel coupling

Note: Consult factory for applications exceeding maximum pressure and/or temperature indicated.

## APPROXIMATE PUMP DIMENSIONS



All information is approximate and is intended for general guidance only. Wastecorp Pumps reserves the right to make changes in design, materials and operating ranges without notice.

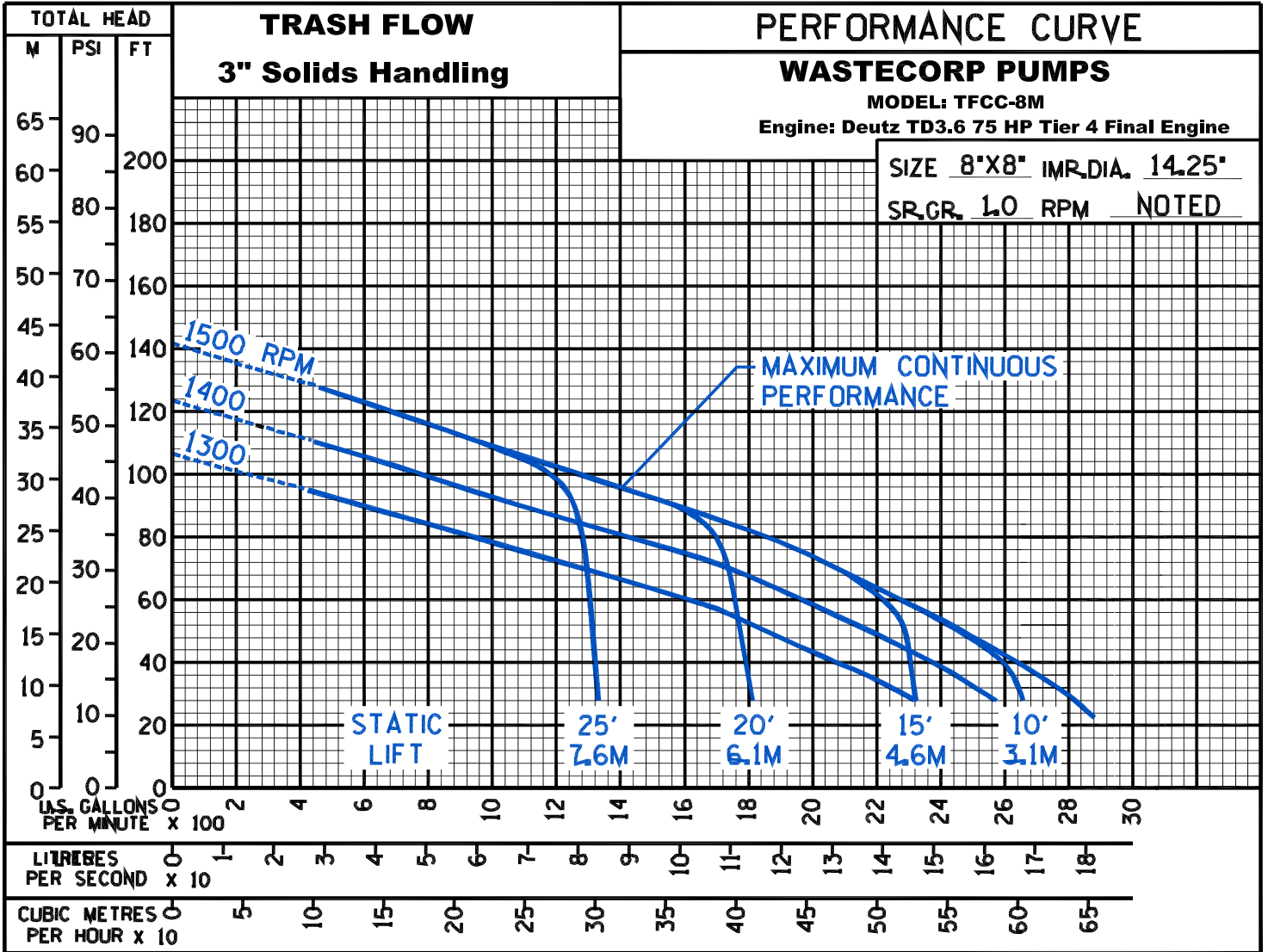
# TRASH FLOW®

ENGINE DRIVEN TRASH PUMPS

TFCC-8M™



**WASTECORP**  
Pumps®



Wastecorp Pumps USA  
P.O. Box 70  
Grand Island, New York 14072 | USA  
Tel: 888.829.2783 | Fax: 888.883.3320  
sales@wastecorp.com

Wastecorp Pumps Canada Inc.  
50 Shorncliffe Road  
Toronto, Ontario M8Z-5K1 | Canada  
Tel: 416.233.3000 | Fax: 416.233.2300  
info@wastecorp.com

Wastecorp Pumps International  
P.O. Box 70  
Grand Island, New York 14072 | USA  
Tel: 201.445.2882 | Fax: 201.445.3252  
techsupport@wastecorp.com