

## TRASH HOG®

SOLIDS HANDLING PUMP

**TFX-2TH**

### FEATURES

TRANSFER UP TO  
185 GPM

MAX. HEAD 95 FT.

HEAVY DUTY BEARINGS  
AND CASTINGS

1" SOLIDS HANDLING

DURABLE & LIGHT  
DESIGN

OPTIONAL WHEEL  
MOUNT ACCESSORY  
AVAILABLE\*

\*optional



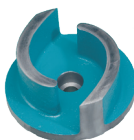
**TRASH HOG®**



## THE **TFX-2TH**. THE TOUGH AND COMPACT SOLIDS HANDLING TRASH PUMP.

The TFX-2TH is a rigid, compact and portable solids handling trash pump. With its durable frame and light weight you can take this utility pump right into the work area. The TFX-2TH can pump water and solids up to 1" solids and 185 GPM with up to 95 ft. of discharge head. With the optional wheel mount kit this pump is perfect for on the move operations.

### FEATURES



#### SOLIDS HANDLING IMPELLERS

Trash Flow pumps feature our standard premium two-vane solids handling impellers with solids handling capabilities up to 1".



#### TFX TRASH PUMP WHEEL KIT

The optional wheel kit accessory is designed to fit your choice of TFX trash pump and provides even more portability.

### PUMP SPECIFICATIONS

Model	TRASH HOG® TFX-2TH
Connection Diameter	2" NPT
Max. Flow Rate	185 GPM
Max Discharge Head	95 Ft.
Max Suction Lift	26 Ft.
Max Spherical Solids	1"
Dimensions	24"x 18"x 19"
Weight	110 Lbs

### ENGINE SPECIFICATIONS

Engine Model	GX160
Horse Power	4.8 HP
Displacement	163cc
Fuel Tank Capacity	.95 gal
Continuous Run Time	2 Hours
Starting Method	Recoil
Standard Accessories	1 strainer, 1 Spanner, 1 Engine Tool Set
	Optional electric start and diesel engine