

TRASH HOG™
SOLIDS HANDLING PUMP
TFX-3TH

FEATURES

TRANSFER UP TO
383 GPM

MAX. HEAD 89 FT.

HEAVY DUTY BEARINGS
AND CASTINGS

1.5" SOLIDS HANDLING

DURABLE & LIGHT
DESIGN

OPTIONAL WHEEL
MOUNT ACCESSORY
AVAILABLE*

*optional



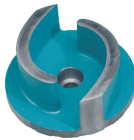
TRASH HOG™



THE **TFX-3TH**. THE TOUGH AND COMPACT SOLIDS HANDLING TRASH PUMP.

The TFX-3TH is a rigid, compact and portable solids handling trash pump. With its durable frame and light weight you can take this utility pump right into the work area. The TFX-3TH can pump water and solids up to 1.5" solids and 383 GPM with up to 89 ft. of discharge head. With the optional wheel mount kit this pump is perfect for on the move operations.

FEATURES



SOLIDS HANDLING IMPELLERS

Trash Flow pumps feature our standard premium two-vane solids handling impellers with solids handling capabilities up to 1.5".



TFX TRASH PUMP WHEEL KIT

The optional wheel kit accessory is designed to fit your choice of TFX trash pump and provides even more portability.

PUMP SPECIFICATIONS

| Model | TRASH HOG TFX-3TH |
|----------------------|-------------------|
| Connection Diameter | 3" NPT |
| Max. Flow Rate | 383 GPM |
| Max Discharge Head | 89 Ft. |
| Max Suction Lift | 26 Ft. |
| Max Spherical Solids | 1.5" |
| Dimensions | 28"x 23"x24" |
| Weight | 160 Lbs |

ENGINE SPECIFICATIONS

| | |
|----------------------|---|
| Engine Model | GX270 |
| Horse Power | 8.5 Hp |
| Displacement | 270cc |
| Fuel Tank Capacity | 1.4 gal |
| Starting Method | Recoil |
| Standard Accessories | 1 strainer, 1 Spanner, 1 Engine Tool Set |
| | Optional electric start and diesel engine |