













WASTECORP.
Pumps®



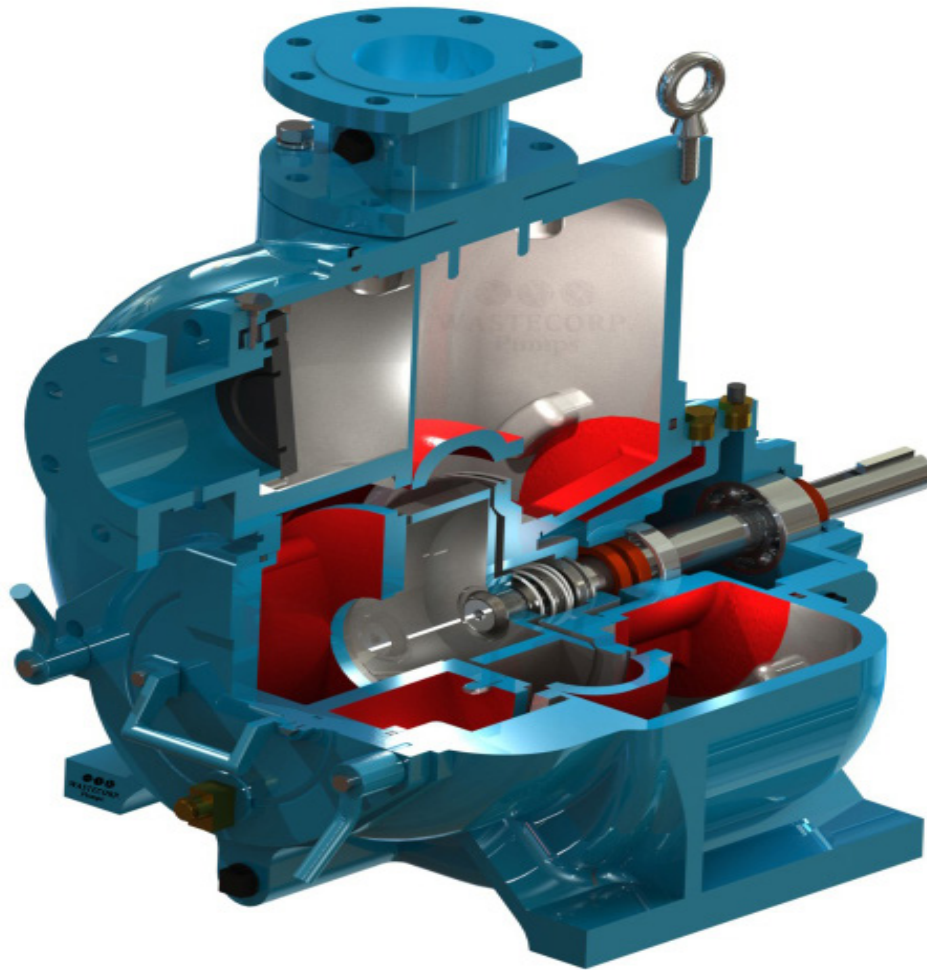
2019 TRASH FLOW® TRASH PUMP BROCHURE
SELF PRIMING CENTRIFUGAL PUMPS
WET PRIME PUMPS

Wastecorp Trash Flow® - Range Overview

OVERVIEW	PRODUCT	TECHNICAL SPECIFICATIONS	PAGE										
<ul style="list-style-type: none"> ■ 2" connection ■ Transfer up to 210 GPM ■ Tungsten carbide mechanical seals 	<p>Trash Flow TFCC-2™ Series</p> 	<table border="1"> <tr> <td>Max. capacity</td> <td>210 GPM</td> </tr> <tr> <td>Max. discharge head</td> <td>48 PSI (110 ft)</td> </tr> <tr> <td>Max. solids</td> <td>1½"</td> </tr> <tr> <td>Connection size</td> <td>2"</td> </tr> <tr> <td>RPM range</td> <td>650-2150</td> </tr> </table>	Max. capacity	210 GPM	Max. discharge head	48 PSI (110 ft)	Max. solids	1½"	Connection size	2"	RPM range	650-2150	6
Max. capacity	210 GPM												
Max. discharge head	48 PSI (110 ft)												
Max. solids	1½"												
Connection size	2"												
RPM range	650-2150												
<ul style="list-style-type: none"> ■ 3" connection ■ Transfer up to 460 GPM ■ Premium shafts with heavy duty mechanical seals with minimum deflection ■ Light weight clean-out cover to remove debris easily 	<p>Trash Flow TFCC-3™ Series</p> 	<table border="1"> <tr> <td>Max. capacity</td> <td>460 GPM</td> </tr> <tr> <td>Max. discharge head</td> <td>115 ft</td> </tr> <tr> <td>Max. solids</td> <td>2½"</td> </tr> <tr> <td>Connection size</td> <td>3"</td> </tr> <tr> <td>RPM range</td> <td>650-2400</td> </tr> </table>	Max. capacity	460 GPM	Max. discharge head	115 ft	Max. solids	2½"	Connection size	3"	RPM range	650-2400	7
Max. capacity	460 GPM												
Max. discharge head	115 ft												
Max. solids	2½"												
Connection size	3"												
RPM range	650-2400												
<ul style="list-style-type: none"> ■ 4" connection ■ Transfer up to 740 GPM ■ Available stainless steel models for select applications ■ Non-clog impeller 	<p>Trash Flow TFCC-4™ Series</p> 	<table border="1"> <tr> <td>Max. capacity</td> <td>740 GPM</td> </tr> <tr> <td>Max. discharge head</td> <td>115 ft</td> </tr> <tr> <td>Max. solids</td> <td>3"</td> </tr> <tr> <td>Connection size</td> <td>4"</td> </tr> <tr> <td>RPM range</td> <td>650-2400</td> </tr> </table>	Max. capacity	740 GPM	Max. discharge head	115 ft	Max. solids	3"	Connection size	4"	RPM range	650-2400	10
Max. capacity	740 GPM												
Max. discharge head	115 ft												
Max. solids	3"												
Connection size	4"												
RPM range	650-2400												
<ul style="list-style-type: none"> ■ 6" connection ■ Transfer up to 1500 GPM ■ Premium shafts with heavy duty mechanical seals with minimum deflection ■ Thick vanes and back shroud assist in conquering the toughest applications 	<p>Trash Flow TFCC-6™ Series</p> 	<table border="1"> <tr> <td>Max. capacity</td> <td>1500 GPM</td> </tr> <tr> <td>Max. discharge head</td> <td>115 ft</td> </tr> <tr> <td>Max. solids</td> <td>3"</td> </tr> <tr> <td>Connection size</td> <td>6"</td> </tr> <tr> <td>RPM range</td> <td>650-2200</td> </tr> </table>	Max. capacity	1500 GPM	Max. discharge head	115 ft	Max. solids	3"	Connection size	6"	RPM range	650-2200	11
Max. capacity	1500 GPM												
Max. discharge head	115 ft												
Max. solids	3"												
Connection size	6"												
RPM range	650-2200												
<ul style="list-style-type: none"> ■ 8" connection ■ Up to 2700 GPM ■ Easy clean out and inspection port ■ Heavy duty self priming solids handling capabilities 	<p>Trash Flow TFCC-8™ Series</p> 	<table border="1"> <tr> <td>Max. capacity</td> <td>2700 GPM</td> </tr> <tr> <td>Max. discharge head</td> <td>120 ft</td> </tr> <tr> <td>Max. solids</td> <td>3"</td> </tr> <tr> <td>Connection size</td> <td>8"</td> </tr> <tr> <td>RPM range</td> <td>650-1450</td> </tr> </table>	Max. capacity	2700 GPM	Max. discharge head	120 ft	Max. solids	3"	Connection size	8"	RPM range	650-1450	12
Max. capacity	2700 GPM												
Max. discharge head	120 ft												
Max. solids	3"												
Connection size	8"												
RPM range	650-1450												

OVERVIEW	PRODUCT	TECHNICAL SPECIFICATIONS	PAGE										
<ul style="list-style-type: none"> ■ 10" connection ■ Up to 3200 GPM ■ Back pull out design ■ 99 psi max operating pressure 	<p>Trash Flow TFCC-10™ Series</p> 	<table border="1"> <tr> <td>Max. capacity</td> <td>3200 GPM</td> </tr> <tr> <td>Max. discharge head</td> <td>131 ft</td> </tr> <tr> <td>Max. solids</td> <td>3"</td> </tr> <tr> <td>Connection size</td> <td>10"</td> </tr> <tr> <td>RPM range</td> <td>650-1450</td> </tr> </table>	Max. capacity	3200 GPM	Max. discharge head	131 ft	Max. solids	3"	Connection size	10"	RPM range	650-1450	<p>13</p>
Max. capacity	3200 GPM												
Max. discharge head	131 ft												
Max. solids	3"												
Connection size	10"												
RPM range	650-1450												
<ul style="list-style-type: none"> ■ 12" connection ■ Up to 6200 GPM ■ Convenient back pull out design ■ 120 psi max operating pressure 	<p>Trash Flow TFCC-12™ Series</p> 	<table border="1"> <tr> <td>Max. capacity</td> <td>5500 GPM</td> </tr> <tr> <td>Max. discharge head</td> <td>140 ft</td> </tr> <tr> <td>Max. solids</td> <td>3"</td> </tr> <tr> <td>Connection size</td> <td>12"</td> </tr> <tr> <td>RPM range</td> <td>650-1250</td> </tr> </table>	Max. capacity	5500 GPM	Max. discharge head	140 ft	Max. solids	3"	Connection size	12"	RPM range	650-1250	<p>16</p>
Max. capacity	5500 GPM												
Max. discharge head	140 ft												
Max. solids	3"												
Connection size	12"												
RPM range	650-1250												
<ul style="list-style-type: none"> ■ 3", 4" or 6" connections ■ Up to 1350 GPM ■ 200 ft max head ■ 123 psi max operating pressure 	<p>Trash Flow H Series - High head</p> 	<table border="1"> <tr> <td>Max. capacity</td> <td>1350 GPM</td> </tr> <tr> <td>Max. discharge head</td> <td>Up to 200 ft</td> </tr> <tr> <td>Max. solids</td> <td>1 1/4"</td> </tr> <tr> <td>Connection size</td> <td>3", 4", 6"</td> </tr> <tr> <td>RPM range</td> <td>850-2200</td> </tr> </table>	Max. capacity	1350 GPM	Max. discharge head	Up to 200 ft	Max. solids	1 1/4"	Connection size	3", 4", 6"	RPM range	850-2200	<p>17</p>
Max. capacity	1350 GPM												
Max. discharge head	Up to 200 ft												
Max. solids	1 1/4"												
Connection size	3", 4", 6"												
RPM range	850-2200												
<ul style="list-style-type: none"> ■ Heavy duty engine driven pumps available in trailer, skid mount and Husher silent models ■ Select from 3"-10" models ■ Gas and diesel engines available from Deutz®, John Deere® and Cat® and more 	<p>Trash Flow Engine Driven</p> 	<table border="1"> <tr> <td>Max. capacity</td> <td>5500 GPM</td> </tr> <tr> <td>Max. discharge head</td> <td>135 ft</td> </tr> <tr> <td>Max. solids</td> <td>3"</td> </tr> <tr> <td>Connection size</td> <td>2"-12"</td> </tr> <tr> <td>RPM range</td> <td>650-2400</td> </tr> </table>	Max. capacity	5500 GPM	Max. discharge head	135 ft	Max. solids	3"	Connection size	2"-12"	RPM range	650-2400	<p>20</p>
Max. capacity	5500 GPM												
Max. discharge head	135 ft												
Max. solids	3"												
Connection size	2"-12"												
RPM range	650-2400												
<ul style="list-style-type: none"> ■ Above ground, below ground and auto start models available ■ Custom control panels and enclosures ■ 2"-12" pumps available ■ Compatible with other pump brands 	<p>Trash Flow Lift Stations</p> 	<table border="1"> <tr> <td>Max. capacity</td> <td>15000 GPM</td> </tr> <tr> <td>Max. discharge head</td> <td>135 ft</td> </tr> <tr> <td>Max. solids</td> <td>3"</td> </tr> <tr> <td>Connection sizes available</td> <td>2"-12"</td> </tr> <tr> <td>RPM range</td> <td>850-2200</td> </tr> </table>	Max. capacity	15000 GPM	Max. discharge head	135 ft	Max. solids	3"	Connection sizes available	2"-12"	RPM range	850-2200	<p>26</p>
Max. capacity	15000 GPM												
Max. discharge head	135 ft												
Max. solids	3"												
Connection sizes available	2"-12"												
RPM range	850-2200												

Wastecorp Trash Flow® Cutaway Drawing



PATENTED ADJUSTABLE WEAR PLATE CARRIER

This unique design allows precise adjustment of impeller to wear ring tolerance. The Trash Flow's design reduces maintenance costs and can improve overall pump efficiency without shimming or premature wear plate replacement.

UNIQUE AXIAL RIB DESIGN

Axial ribs located on the inner stuffing box, prevent entrapment of solids and vapor near the mechanical seal.

SOLIDS HANDLING IMPELLER

Concentrically designed and computer-balanced impellers are engineered to pass solids in excess of 50% of the inlet hole.

ENLARGED BEARING HOUSING

The oversized bearing housing gives unsurpassed shaft support, reducing roller bearing fatigue.

REAR PUMP OUT VANES

Rear pump out vanes greatly reduce axial thrust and pressure increases pump performance and overall efficiency.

QUICK, CLEAN DESIGN

The back-pull design allows for removal of full rotation assembly without disturbing plumbing. It also permits replacement of wear plate and access for casing inspection.

ENLARGED CLEAN OUT PORT

Large sized clean-out holes allow for inspection of inner casing by a simple twist of the hand knobs (no special tools required).

STAINLESS STEEL SHAFING MATERIAL

The enlarged shaft reduces deflection and shock loads at the mechanical seal to less than 0.003".

CORROSION RESISTANT ROLLER BEARINGS

The oversized ball bearings are oil lubricated, requiring no external cooling and are designed to operate for a minimum of 120,000 hours without replacement.

REPLACEABLE SUCTION FLAPPER

The heavy duty flapper valve is easily accessible for general inspection.

FLANGED GAUGE CONNECTIONS

Standard gauge connections in accordance to ANSI standards allow for recording and monitoring suction and discharge pressures with the use of Wastecorp's selection of optional pressure gauges.

CORROSION RESISTANT CASING

All Trash Flow® pumps are designed with thick walled casings to withstand abrasive sludge and slurries. Most models are available in a variety of castable materials, although generally supplied in cast and ductile iron.

Stationary Variations

SOLIDS HANDLING PUMPS
Trash Flow TFCC-6 shown here at an industrial lagoon pumping operation. Close coupled flex drive.



Belt Drive



Direct Flex Coupled



Piggy Back



Lift Station



Wastecorp Trash Flow® TFCC-2™ Series



Performance Range

Connection size	2"x2" (50 mm x 50 mm)
Max. capacity	210 GPM
Max. head	110 ft (33 m)
Max. suction lift	25 ft. (7.62 m)
Max. temp.	160°F (71°C)
Max. solids (in)	1½" (38 mm)
Max. operating pressure	79 psi (545 kPa)

Materials of Construction

Pump casing	Standard cast iron (A48CL30). Optional: 316 SS, 304 SS, ADI, Hastelloy C276, CD4MCU
Impeller	Max. 6.45" OD, Ductile Iron ASTM A536, Grade 60-40-18 Semi-Open Type, Two-Vane Impeller, (2 plane, computer dynamically balanced)
Wear Plate (replaceable)	Standard, SAE1020 steel
Cover Plate (removable)	Standard cast iron, A48CL30
Bearing /Seal Cavity Lubrication	SAE no. 30 oil
Seal Plate	Grey iron, A48CL30
Flapper Valve	EPDM (optional Viton available)
Shaft Sleeve	316 stainless steel
Impeller Shaft	AISI 4140 , high tensile steel
Mechanical Seal	Component type seal, Viton secondary seals, tungsten carbide primary rings, SS metal parts, tungsten carbide mating rings & SS springs
Bearings	Front and rear open, deep groove bearings ball (NSK or equal)
Optional Materials (internals)	316 SS, 304 SS, ADI, Hastelloy C276, A216, CD4MCU

TFCC-2 Series Model Selection

Model	Part no.
TFCC-2 Trash Pump (bare pump)	63914-00
TFCC-2F (flex coupled) 1.5 hp, 1200 RPM	64423-00
TFCC-2F (flex coupled) 2 hp, 1200 RPM	64424-00
TFCC-2F (flex coupled) 3 hp, 1200 RPM	64425-00
TFCC-2F (flex coupled) 5 hp, 1200 RPM	64426-00
TFCC-2F (flex coupled) 7.5 hp, 1200 RPM	64427-00
TFCC-2F (flex coupled) 10 hp, 1200 RPM	64428-00
TFCC-2B (belt driven) various motor sizes	64990-00
TFCC-2F (flex coupled) 1 hp, 1800 RPM	64429-00
TFCC-2F (flex coupled) 1.5 hp, 1800 RPM	64430-00
TFCC-2F (flex coupled) 2 hp, 1800 RPM	64431-00
TFCC-2F (flex coupled) 3 hp, 1800 RPM	64432-00
TFCC-2F (flex coupled) 5 hp, 1800 RPM	64433-00
TFCC-2F (flex coupled) 7.5hp, 1800 RPM	64434-00
TFCC-2F (flex coupled) 10 hp, 1800 RPM	64435-00
Available 3600 RPM Motors	Call
Available 50 Hz motors	Call
Available TEFC and explosion proof motors	Call

Spare Parts/Accessories

Description	Part no.
Rotating Assembly (impeller, shaft, bearing, mech. seal)	63915-00
Mechanical Seal Assembly	63388-02
Gasket kit	65009-00
Flapper suction valve assembly (EPDM)	64019-00
Various optional connections: NPT, DIN, hose camlocks	88888-88

Wastecorp Trash Flow® TFCC-3™ Series



Removable Cover plate

Easily access the pump interior with the Trash-Flow's standard removable cover plate. No special tools are required for removal.

Performance Range

Connection size	3"x3" [76mmx76mm]
Max. capacity	460 GPM
Max. head	110 ft (33 m)
Max. suction lift	25 ft. (7.62 m)
Max. temp.	160°F (71°C)
Max. solids (in)	2 ½"(63 mm)
Max. operating pressure	86 psi (593 kPa)
RPM range	650-2400

Materials of Construction

Pump casing	Standard cast iron (A48CL30), optional 316 SS, 304 SS, ADI, Hastelloy C276, CD4MCU
Impeller	Max. 12.38" OD, Ductile Iron ASTM A536, Grade 60-40-18 Semi-Open Type, Two-Vane Impeller, (2 plane, computer dynamically balanced)
Wear Plate (replaceable)	Standard, SAE1020 steel
Cover Plate (removable)	Standard cast iron, A48CL30
Bearing /Seal Cavity Lubrication	SAE no. 30 oil
Seal Plate	Grey iron, A48CL30
Flapper Valve	EPDM (Optional Viton Available)
Shaft Sleeve	316 stainless steel
Impeller Shaft	AISI 4140 , high tensile steel
Mechanical Seal	Component type seal, Viton secondary seals, tungsten carbide primary rings, SS metal parts, tungsten carbide mating rings & SS springs
Bearings	Front and rear open, deep groove bearings ball (NSK or equal)
Optional Materials (internals)	316 SS, 304 SS, ADI, Hastelloy C276, A216, CD4MCU

TFCC-3 Series Model Selection

Model	Part no.
TFCC-3 Trash Pump (bare pump)	62402-00
TFCC-3F (flex coupled) 2 hp, 1200 RPM	63463-00
TFCC-3F (flex coupled) 3 hp, 1200 RPM	63464-00
TFCC-3F (flex coupled) 5 hp, 1200 RPM	63465-00
TFCC-3F (flex coupled) 7.5 hp, 1200 RPM	63466-00
TFCC-3F (flex coupled) 10 hp, 1200 RPM	63467-00
TFCC-3F (flex coupled) 15 hp, 1200 RPM	63468-00
TFCC-3F (flex coupled) 20 hp, 1200 RPM	63469-00
TFCC-3PB belt driven piggy back mount	63446-00
TFCC-3B (belt driven) various motor sizes	88888-88
Available 3600 RPM Motors	Call
Available 50 Hz motors	Call
Available explosion proof motors	Call

Spare Parts/Accessories

Description	Part no.
Rotating Assembly (impeller, shaft, bearing, mech. seal)	61204-00
Flapper suction valve assembly	61208-00
Mechanical seal assembly	63388-02
Flapper suction valve assembly (EPDM)	64019-00
Automatic air release valve (5, 10, 25 & 80 psi)	62295-00
120/240 V casing heater	88888-88
High temperature shutdown kit	88888-88
Moisture probe	88888-88
Gauge kit	64194-00
Various optional connections: NPT, DIN, hose camlocks	99999-99
Gasket kit	62645-00





SEWAGE LIFT STATIONS FOR MUNICIPALITIES
Trash Flow sewage lift stations are available in hundreds of configurations for municipal WWTP's industrial solids management and more. Put over 23 years of pump manufacturing experience to work for your pumping needs.

Wastecorp Trash Flow® TFCC-4™ Series



Shown: Bare pump



Optional suction and discharge gauges
Monitor operating pressure easily with Wastecorp's optional suction and discharge gauges.

Performance Range

Connection size	4"x4" [101 mm x 101 mm]
Max. capacity	740 GPM
Max. head	115 ft (35 m)
Max. suction lift	25 ft. (7.62 m)
Max. temp.	160°F (71°C)
Max. solids (in)	3"(76.2 mm)
Max. operating pressure	86 psi (593 kPa)
RPM range	650-1950

Materials of Construction

Pump casing	Standard cast iron (A48CL30). Optional: 316 SS, 304 SS, ADI, Hastelloy C276, CD4MCU
Impeller	Max. 9.75" OD, Ductile Iron ASTM A536, Grade 60-40-18 Semi-Open Type, Two-Vane Impeller, (2 plane, computer dynamically balanced)
Wear Plate (replaceable)	Standard, SAE1020 steel
Cover Plate (removable)	Standard cast iron, A48CL30
Bearing /Seal Cavity Lubrication	SAE no. 30 oil
Seal Plate	Grey iron, A48CL30
Flapper Valve	EPDM (optional Viton available)
Shaft Sleeve	316 stainless steel
Impeller Shaft	AISI 4140 , high tensile steel
Mechanical Seal	Component type seal, Viton secondary seals, tungsten carbide primary rings, SS metal parts, tungsten carbide mating rings & SS springs
Bearings	Front and rear open, deep groove bearings ball (NSK or equal)
Optional Materials (internals)	316 SS, 304 SS, ADI, Hastelloy C276, A216, CD4MCU

TFCC-4 Series Model Selection

Model	Part no.
TFCC-4 Trash Pump (bare pump)	62403-00
TFCC-4F (flex coupled) 3 hp, 1200 RPM	63483-00
TFCC-4F (flex coupled) 5 hp, 1200 RPM	63484-00
TFCC-4F (flex coupled) 7.5 hp, 1200 RPM	63485-00
TFCC-4F (flex coupled) 10 hp, 1200 RPM	63486-00
TFCC-4F (flex coupled) 15 hp, 1200 RPM	63487-00
TFCC-4F (flex coupled) 20 hp, 1200 RPM	63488-00
TFCC-4F (flex coupled) 25 hp, 1200 RPM	63489-00
TFCC-4B (belt driven) various motor sizes	88888-88
TFCC-4B (belt driven) Piggy back mount	63447-00
TFCC-4F (flex coupled) 3 hp, 1800 RPM	63473-00
TFCC-4F (flex coupled) 5 hp, 1800 RPM	63474-00
TFCC-4F (flex coupled) 7.5 hp, 1800 RPM	63475-00
TFCC-4F (flex coupled) 10 hp, 1800 RPM	63476-00
TFCC-4F (flex coupled) 15 hp, 1800 RPM	63477-00
TFCC-4F (flex coupled) 20 hp, 1800 RPM	63478-00
TFCC-4F (flex coupled) 25 hp, 1800 RPM	63479-00
Available 3600 RPM Motors	Call
Available 50 Hz motors	Call
Available explosion proof motors	Call

Spare Parts/Accessories

Description	Part no.
Rotating assembly (impeller, shaft, bearing, mechanical seal)	62927-00
Mechanical seal assembly	63388-02
Automatic air release valve (5, 10, 25 & 80 psi)	62295-00
120/240 V casing heater	88888-88
High temperature shutdown kit	88888-88
Moisture probe	88888-88
Gauge kit	64194-00
Gasket kit	62646-00
Flapper suction valve assembly	61415-00
Various optional connections: NPT, DIN, hose camlocks	99999-99

Wastecorp Trash Flow® TFCC-6™ Series



Shown: bare pump model

Performance Range

Connection size	6"x6" (50 mm x 50 mm)
Max. capacity	1500 GPM (340 m ³ /hr)
Max. head	115 ft (35 m)
Max. suction lift	25 ft. (7.62 m)
Max. temp.	160°F (71°C)
Max. solids (in)	3" (76 mm)
Max. operating pressure	79 psi (545 kPa)
Operating range	650-1550 RPM

Materials of Construction

Pump casing	Standard cast iron (A48CL30). Optional: 316 SS, 304 SS, ADI, Hastelloy C276, CD4MCU
Impeller	Max. 12.38" OD, Ductile Iron ASTM A536, Grade 60-40-18 Semi-Open Type, Two-Vane Impeller, (2 plane, computer dynamically balanced)
Wear Plate (replaceable)	Standard, SAE1020 steel
Cover Plate (removable)	Standard cast iron, ASTM A48CL30
Bearing /Seal Cavity Lubrication	SAE no. 30 oil
Seal Plate	Standard cast iron, ASTM A48CL30
Flapper Valve	EPDM (optional Viton available)
Shaft Sleeve	316 stainless steel
Impeller Shaft	AISI 4140 , high tensile steel
Mechanical Seal	Component type seal, Viton secondary seals, tungsten carbide primary rings, SS metal parts, tungsten carbide mating rings & SS springs
Bearings	Front and rear open, deep groove bearings ball (NSK or equal)
Optional Materials (internals)	316 SS, 304 SS, ADI, Hastelloy C276, A216, CD4MCU

TFCC-6 Series Model Selection

Model	Part no.
TFCC-6 Trash Pump (bare pump)	62404-00
TFCC-6F (flex coupled) 5 hp, 1200 RPM	63500-00
TFCC-6F (flex coupled) 7.5 hp, 1200 RPM	63501-00
TFCC-6F (flex coupled) 10 hp, 1200 RPM	63502-00
TFCC-6F (flex coupled) 15 hp, 1200 RPM	63503-00
TFCC-6F (flex coupled) 20 hp, 1200 RPM	63504-00
TFCC-6F (flex coupled) 25 hp, 1200 RPM	63505-00
TFCC-6F (flex coupled) 30 hp, 1200 RPM	63506-00
TFCC-6F (flex coupled) 40 hp, 1200 RPM	63507-00
TFCC-6B (belt driven) various motor sizes	63448-00
TFCC-6F (flex coupled) 5 hp, 1800 RPM	63491-00
TFCC-6F (flex coupled) 7.5 hp, 1800 RPM	63492-00
TFCC-6F (flex coupled) 10 hp, 1800 RPM	63493-00
TFCC-6F (flex coupled) 15 hp, 1800 RPM	63494-00
TFCC-6F (flex coupled) 20hp, 1800 RPM	63495-00
TFCC-6F (flex coupled) 25 hp, 1800 RPM	63496-00
TFCC-6F (flex coupled) 30 hp, 1800 RPM	63497-00
TFCC-6F (flex coupled) 40 hp, 1800 RPM	63498-00
Available 3600 RPM Motors	Call
Available 50 Hz motors	Call
Available TEFC and explosion proof motors	Call

Spare Parts/Accessories

Description	Part no.
Rotating Assembly (impeller, shaft, bearing, mech. seal)	62505-00
Mechanical seal assembly	63388-02
Automatic air release valve (5, 10, 25 & 80 psi)	62295-00
120/240 V casing heater	88888-88
High temperature shutdown kit	88888-88
Moisture probe	88888-88
Gauge kit	64194-00
Various optional connections: NPT, DIN, hose camlocks	99999-99
Gasket kit	62647-00
Flapper suction valve assembly	62508-00

Wastecorp Trash Flow® TFCC-8™ Series



Performance Range

Connection size	8"x8" (203 mm x 203 mm)
Max. capacity	2700 GPM (613 m³/hr)
Max. head	110 ft (33 m)
Max. suction lift	25 ft. (7.62 m)
Max. temp.	160°F (71°C)
Max. solids (in)	3" (76 mm)
Max. operating pressure	83 psi (572 kPa)
Operating range	650-1350 RPM

Materials of Construction

Pump casing	Standard cast iron (A48CL30), Optional: 316 SS, 304 SS, ADI, Hastelloy C276, CD4MCU
Impeller	Max. 14.75" OD, Ductile Iron ASTM A536, Grade 60-40-18 Semi-Open Type, Two-Vane Impeller, (2 plane, computer dynamically balanced)
Wear Plate (replaceable)	Standard, SAE1020 steel
Cover Plate (removable)	Standard cast iron, A48CL30
Bearing /Seal Cavity Lubrication	SAE no. 30 oil
Seal Plate	Standard cast iron, A48CL30
Flapper Valve	EPDM (optional Viton available)
Shaft Sleeve	316 stainless steel
Impeller Shaft	AISI 4140, high tensile steel
Mechanical Seal	Component type seal, Viton secondary seals, tungsten carbide primary rings, SS metal parts, tungsten carbide mating rings & SS springs
Bearings	Front and rear open, deep groove bearings ball (NSK or equal)
Optional Materials (internals)	316 SS, 304 SS, ADI, Hastelloy C276, A216, CD4MCU

TFCC-8 Series Model Selection

Model	Part no.
TFCC-8 Trash Pump (bare pump)	62406-00
TFCC-8F (flex coupled) 10 hp, 1200 RPM	63519-00
TFCC-8F (flex coupled) 15 hp, 1200 RPM	63520-00
TFCC-8F (flex coupled) 20 hp, 1200 RPM	63521-00
TFCC-8F (flex coupled) 25 hp, 1200 RPM	63522-00
TFCC-8F (flex coupled) 30 hp, 1200 RPM	63523-00
TFCC-8F (flex coupled) 45 hp, 1200 RPM	63524-00
TFCC-8F (flex coupled) 50 hp, 1200 RPM	63525-00
TFCC-8F (flex coupled) 60 hp, 1200 RPM	63526-00
TFCC-8F (flex coupled) 75 hp, 1200 RPM	63527-00
TFCC-8B (belt driven) various motor sizes	63449-00
TFCC-8F (flex coupled) 5 hp, 1800 RPM	63509-00
TFCC-8F (flex coupled) 7.5 hp, 1800 RPM	63510-00
TFCC-8F (flex coupled) 10 hp, 1800 RPM	63511-00
TFCC-8F (flex coupled) 15 hp, 1800 RPM	63512-00
TFCC-8F (flex coupled) 20hp, 1800 RPM	63513-00
TFCC-8F (flex coupled) 25 hp, 1800 RPM	63514-00
TFCC-8F (flex coupled) 30 hp, 1800 RPM	63515-00
TFCC-8F (flex coupled) 40 hp, 1800 RPM	63516-00
TFCC-8F (flex coupled) 40 hp, 1800 RPM	63517-00
Available 3600 RPM Motors	Call
Available 50 Hz motors	Call
Available explosion proof motors	Call

Spare Parts/Accessories

Description	Part no.
Rotating Assembly (impeller, shaft, bearing, mech. seal)	62424-00
Mechanical seal assembly	62413-00
Automatic air release valve (5, 10, 25 & 80 psi)	62295-00
120/240 V casing heater	88888-88
High temperature shutdown kit	88888-88
Moisture probe	88888-88
Gasket kit	62648-00
Gauge kit	64194-00
Flapper suction valve assembly	62421-00
Various optional connections: NPT, DIN, hose camlocks	99999-99

Wastecorp Trash Flow® TFCC-10™ Series



Performance Range

Connection size	10"x10" (250 mm x 250 mm)
Max. capacity	3200 GPM (726 m³/hr)
Max. head	131 ft (40 m)
Max. suction lift	22 ft. (6.7 m)
Max. temp.	160°F (71°C)
Max. solids (in)	3" (76 mm)
Max. operating pressure	99 psi (683 kPa)
Operating range	650-1450 RPM

Materials of Construction

Pump casing	Standard cast iron (A48CL30), optional 316 SS, 304 SS, ADI, Hastelloy C276, CD4MCU
Impeller	Max. 14.75" OD, Ductile Iron ASTM A536, Grade 60-40-18 Semi-Open Type, Two-Vane Impeller, (2 plane, computer dynamically balanced)
Wear Plate (replaceable)	Standard, SAE1020 steel
Cover Plate (removable)	Standard cast iron, ASTM A48CL30
Bearing /Seal Cavity Lubrication	SAE no. 30 oil
Seal Plate	Standard cast iron, ASTM A48CL30
Flapper Valve	EPDM (optional Viton available)
Shaft Sleeve	316 stainless steel
Impeller Shaft	AISI 4140, high tensile steel
Mechanical Seal	Component type seal, Viton secondary seals, tungsten carbide primary rings, SS metal parts, tungsten carbide mating rings & SS springs
Bearings	Front and rear open, deep groove bearings ball (NSK or equal)
Optional Materials (internals)	316 SS, 304 SS, ADI, Hastelloy C276, CD4MCU

TFCC-10 Series Model Selection

Model	Part no.
TFCC-10 Trash Pump (bare pump)	63374-00
TFCC-10F (flex coupled) 10 hp, 1200 RPM	63540-00
TFCC-10F (flex coupled) 15 hp, 1200 RPM	63541-00
TFCC-10F (flex coupled) 20 hp, 1200 RPM	63542-00
TFCC-10F (flex coupled) 25 hp, 1200 RPM	63543-00
TFCC-10F (flex coupled) 30 hp, 1200 RPM	63544-00
TFCC-10F (flex coupled) 40 hp, 1200 RPM	63545-00
TFCC-10F (flex coupled) 50 hp, 1200 RPM	63546-00
TFCC-10F (flex coupled) 60 hp, 1200 RPM	63547-00
TFCC-10F (flex coupled) 75 hp, 1200 RPM	63548-00
TFCC-10F (flex coupled) 100 hp, 1200 RPM	63549-00
TFCC-10B (belt driven) various motor sizes	88888-88
TFCC-10F (flex coupled) 10 hp, 1800 RPM	63529-00
TFCC-10F (flex coupled) 15 hp, 1800 RPM	63530-00
TFCC-10F (flex coupled) 20 hp, 1800 RPM	63531-00
TFCC-10F (flex coupled) 25 hp, 1800 RPM	63532-00
TFCC-10F (flex coupled) 30 hp, 1800 RPM	63533-00
TFCC-10F (flex coupled) 40 hp, 1800 RPM	63534-00
TFCC-10F (flex coupled) 50 hp, 1800 RPM	63535-00
TFCC-10F (flex coupled) 60 hp, 1800 RPM	63536-00
TFCC-10F (flex coupled) 75 hp, 1800 RPM	63537-00
TFCC-10F (flex coupled) 100 hp, 1800 RPM	63538-00
Available 3600 RPM Motors	Call
Available 50 Hz motors	Call
Available explosion proof motors	Call

Spare Parts/Accessories

Description	Part no.
Rotating Assembly (impeller, shaft, bearing, mech. seal)	63375-00
Mechanical seal assembly	62413-00
Automatic air release valve (5, 10, 25 & 80 psi)	62295-00
120/240 V casing heater	88888-88
High temperature shutdown kit	88888-88
Moisture probe	88888-88
Gauge kit	64194-00
Various optional connections: NPT, DIN, hose camlocks	99999-99
Gasket kit	64292-00
Flapper suction valve assembly	63376-00

Sample Trash Flow Installations



WASTEWATER PUMPS Shown: Trash Flow TFCC-2 installed at a Connecticut wastewater treatment plant. Direct drive model shown. 2" connection with pumping capabilities up to 210 GPM.



FOOD PROCESSING PUMPS Shown Trash Flow TFCC-3 installed at a Massachusetts food processing facility. End user pumps apple cores, skins and other solids. Close coupled direct drive model shown.



PULP AND PAPER TRANSFER PUMPS Shown TFCC-10 installed at a multinational paper mill in Wisconsin. Belt driven model shown.



TRAILER MOUNTED TRASH PUMPS Shown TFCC-6ML pumping slurry from an industrial lagoon. Deutz diesel engine, DOT approved lighting package and electronic start enhance pumping outdoors.

Wastecorp Trash Flow® TFCC-12™ Series



Performance Range

Connection size	10"x10" (250 mm x 250 mm)
Max. capacity	3200 GPM (726 m³/hr)
Max. head	131 ft (40 m)
Max. suction lift	22 ft. (6.7 m)
Max. temp.	160°F (71°C)
Max. solids (in)	3" (76 mm)
Max. operating pressure	99 psi (683 kPa)
Operating range	650-1450 RPM

Materials of Construction

Pump casing	Standard cast iron (A48CL30), optional 316 SS, 304 SS, ADI, Hastelloy C276, CD4MCU
Impeller	Max. 18" OD, Ductile Iron ASTM A536, Grade 60-40-18 Semi-Open Type, Two-Vane Impeller, (2 plane, computer dynamically balanced)
Wear Plate (replaceable)	Standard, SAE1020 steel
Cover Plate (removable)	Standard cast iron, ASTM A48CL30
Bearing /Seal Cavity Lubrication	SAE no. 30 oil
Seal Plate	Standard cast iron, ASTM A48CL30
Flapper Valve	EPDM (optional Viton available)
Shaft Sleeve	316 stainless steel
Impeller Shaft	AISI 4140 , high tensile steel
Mechanical Seal	Component type seal, Viton secondary seals, tungsten carbide primary rings, SS metal parts, tungsten carbide mating rings & SS springs
Bearings	Front and rear open, deep groove bearings ball (NSK or equal)
Optional Materials (internals)	316 SS, 304 SS, ADI, Hastelloy C276, A216, CD4MCU

TFCC-12 Series Model Selection

Model	Part no.
TFCC-12 Trash Pump (bare pump)	63378-00
TFCC-12F (flex coupled) 20 hp, 1200 RPM	63559-00
TFCC-12F (flex coupled) 25 hp, 1200 RPM	63560-00
TFCC-12F (flex coupled) 20 hp, 1200 RPM	63559-00
TFCC-12F (flex coupled) 25 hp, 1200 RPM	63560-00
TFCC-12F (flex coupled) 30 hp, 1200 RPM	63561-00
TFCC-12F (flex coupled) 40 hp, 1200 RPM	63562-00
TFCC-12F (flex coupled) 50 hp, 1200 RPM	63563-00
TFCC-12F (flex coupled) 60 hp, 1200 RPM	63564-00
TFCC-12F (flex coupled) 75 hp, 1200 RPM	63565-00
TFCC-12F (flex coupled) 100 hp, 1200 RPM	63566-00
TFCC-12F (flex coupled) 125 hp, 1200 RPM	63567-00
TFCC-12B (belt driven) various motor sizes	63451-00
TFCC-12F (flex coupled) 20 hp, 1800 RPM	63550-00
TFCC-12F (flex coupled) 25 hp, 1800 RPM	63551-00
TFCC-12F (flex coupled) 30 hp, 1800 RPM	63552-00
TFCC-12F (flex coupled) 25 hp, 1800 RPM	63553-00
TFCC-12F (flex coupled) 30 hp, 1800 RPM	63554-00
TFCC-12F (flex coupled) 40 hp, 1800 RPM	63553-00
TFCC-12F (flex coupled) 50 hp, 1800 RPM	63554-00
TFCC-12F (flex coupled) 60 hp, 1800 RPM	63555-00
TFCC-12F (flex coupled) 75 hp, 1800 RPM	63556-00
TFCC-12F (flex coupled) 100 hp, 1800 RPM	63557-00
TFCC-12F (flex coupled) 125 hp, 1800 RPM	63558-00
Available 3600 RPM Motors	Call
Available 50 Hz motors	Call
Available explosion proof motors	Call

Spare Parts/Accessories

Description	Part no.
Rotating assembly (impeller, shaft, bearing, mechanical seal)	63379-00
Mechanical seal assembly	63381-00
Automatic air release valve (5, 10, 25 & 80 psi)	62295-00
120/240 V casing heater	88888-88
High temperature shutdown kit	88888-88
Moisture probe	88888-88
Gauge kit	64194-00
Various optional connections: NPT, DIN, hose camlocks	99999-99
Gasket kit	65179-00
Flapper suction check valve assembly	63380-00

Wastecorp Trash Flow® TFCC-HE™ Series - High Head Applications



Performance Range

Connection size	3", 4" or 6" connections
Capacity range	100-1350 GPM
Max. head	200 ft
Max. suction lift	22 ft. (6.7 m)
Max. temp.	160°F
Max. solids (in)	1¼"
Max. casing pressure	123 psi (848 kPa)
Operating range	850-2200 RPM

Materials of Construction

Pump casing	Standard cast iron (A48CL30), optional 316 SS, 304 SS, ADI, Hastelloy C276, CD4MCU
Impeller	Up to 12.5" OD, Ductile Iron ASTM A536, Grade 60-40-18 semi-open type, five vane impeller, (2 plane, computer dynamically balanced)
Wear Plate (replaceable)	Standard, SAE1020 steel
Cover Plate (removable)	Standard cast iron, ASTM A48CL30
Bearing /Seal Cavity Lubrication	SAE no. 30 oil
Seal Plate	Standard cast iron, ASTM A48CL30
Flapper Valve	EPDM (optional Viton available)
Shaft Sleeve	316 stainless steel
Impeller Shaft	AISI 4140 , high tensile steel
Mechanical Seal	Component type seal, Viton secondary seals, tungsten carbide primary rings, SS metal parts, tungsten carbide mating rings & SS springs
Bearings	Front and rear open, deep groove bearings ball (NSK or equal)
Optional Materials (internals)	316 SS, 304 SS, ADI, Hastelloy C276, A216, CD4MCU

Applications

- Municipal, industrial, commercial
- Waste treatment (scum pits, lift stations, digester recirculation, slurry)
- General industrial water and wastewater transfer.
- Pulp and paper (wood yard and processing plant sumps, chip and light pulp handling.
- Food Processing & rendering (fruit & vegetable waste, beef, poultry and seafood waste parts, fleshings, hide, light fat).

Benefits

- Direct replacement with no piping changes for most brands
- Solids handling up to 3"
- Easy inspection and clean out
- Convenient back pull out design

TFCC Series Stationary Models

Model	Part no.
TFCC-3 - 3"x3" bare pump	64671-00
TFCC-4 - 4"x4" bare pump	64580-00
TFCC-6 - 6"x6" bare pump	65004-00

Spare Parts/Accessories

Description	Part no.
Rotating assembly (impeller, shaft, bearing, mechanical seal)	Call
Mechanical seal assembly	63381-00
Automatic air release valve (5, 10, 25 & 80 psi)	62295-00
120/240 V casing heater	88888-88
High temperature shutdown kit	88888-88
Moisture probe	88888-88
Gauge kit	64194-00
Various optional connections: NPT, DIN, hose camlocks	99999-99
High head trash pump mounting options: skid, utility trailer, DOT trailer	Call

QUICKER DELIVERY. BETTER QUALITY. ISO 9001 CERTIFIED. THAT'S TRASH FLOW® ENGINE DRIVEN.

OPTIONAL EQUIPMENT & ACCESSORIES

- Check valve
- Casing heater
- Suction and discharge gauges
- Spare parts kit
- Pump maintenance kit
- John Crane mechanical seals
- Optional elastomers and materials including EPDM, neoprene, Viton and more.
- John Deere , CAT, Deutz diesel, engines
- DOT approved highway package

VACUUM PRIME ASSIST

Available on every engine driven model we manufacture.



Shown: TFCC-6 engine driven pump model with optional vacuum prime assist and DOT approved highway package.

APPLICATIONS

- Designed for drainage, industrial slurries, sewage and more
- Available dry prime feature

BENEFITS

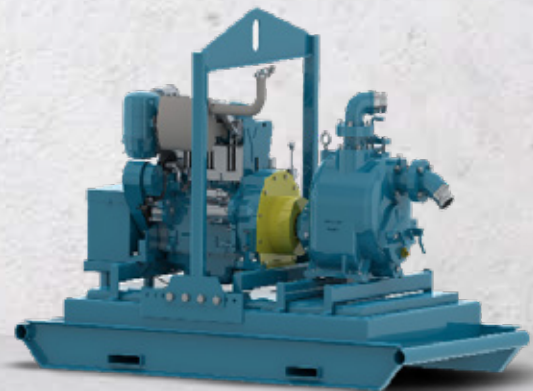
- Removable rotating assembly
- Select from solids handling or multi-vane impellers
- Oil lubricated double floating mechanical seals for abrasive media
- Easy to maintain design

Performance Range

Connection size	3"-12"
Max. capacity	460-5500 GPM
Max. head	135 ft.
Max. temp.	160°F (71°C)
Max. solids (in)	3" (76 mm)
Max. operating pressure	99 psi (683 kPa)
Operating range	650-2400

Materials of Construction

Pump casing	Standard cast iron (A48CL30), optional 316 SS, 304 SS, ADI, Hastelloy C276, CD4MCU
Impeller	Up to 18" OD, Ductile Iron ASTM A536, Grade 60-40-18 Semi-Open Type, Two-Vane Impeller, (2 plane, computer dynamically balanced)
Wear Plate (replaceable)	Standard, SAE1020 steel
Cover Plate (removable)	Standard cast iron, ASTM A48CL30
Bearing /Seal Cavity Lubrication	SAE no. 30 oil
Seal Plate	Standard cast iron, ASTM A48CL30
Flapper Valve	EPDM (optional Viton available)
Shaft Sleeve	316 stainless steel
Impeller Shaft	AISI 4140 , high tensile steel
Mechanical Seal	Component type seal, Viton secondary seals, tungsten carbide primary rings, SS metal parts, tungsten carbide mating rings & SS springs
Bearings	Front and rear open, deep groove bearings ball (NSK or equal)
Optional Materials (internals)	316 SS, 304 SS, ADI, Hastelloy C276, A216, CD4MCU



Shown: Deutz diesel engine with control panel with automatic start and lockable controls during unsupervised operation.

TFCC-ML - Heavy Duty



- 3", 4" or 6" connections available
- Rated for heavy duty applications
- Up to 49 hp engines available

Performance Range	TFCC-3ML	TFCC-4ML	TFCC-6ML
Connection Size (Standard)	3" x 3" ANSI	4" x 4" ANSI	6" X 6" ANSI
Connection Type:	Male Camlock	Male Camlock	Male Camlock
Max. Capacity	460 GPM (29 l/s)	740 GPM (46.7 l/s)	1500 GPM (94.6 l/s)
Max. Head	110 ft (33 m)	115 ft (35 m)	115 ft (35 m)
Max. Operating Pressure	86 psi (593 kPa)	90 psi (620 kPa)	80 psi (551 kPa)
Max. Suction Lift	25 ft (7.62 m)	25 ft (7.62 m)	25 ft (7.62 m)
Max. Temp.	160°F (71°C)	160°F (71°C)	160°F (71°C)
Max. Solids (inches)	2 1/2" (63 mm)	3" (76.2 mm)	3" (76.2 mm)
Max. Impeller OD Size	8.75" (222.25 mm)	9.75" (247.65 mm)	12.38" (314.45 mm)
Diesel Engine Specifications (Std)	31 HP Deutz D2011L02i Flex Tier 4i, Air-Cooled, 12V Starter, Exhaust Silencer	31 HP Deutz D2011L02i Flex Tier 4i, Air-Cooled, 12V Starter, Exhaust Silencer	49 HP Deutz D2011L03i Flex Tier 4i, Air-Cooled, 12V Starter, Exhaust Silencer

Engine Control Panel Spec

Automatic Preheat, key switch, oil pressure gauge, fluid temp gauge, voltmeter, hour meter, tachometer

Fuel Tank (Certified) Capacity

40 USG

Mounting	Part#	Model	Part#	Model	Part#	Model
Stationary Steel Base	64116-00	TFCC-3ML-S	63630-00	TFCC-4ML-S	63632-00	TFCC-6ML-S
Utility Trailer	64115-10	TFCC-3ML-UT	63631-10	TFCC-4ML-UT	63633-10	TFCC-6ML-UT
DOT Highway Trailer	64115-00	TFCC-3ML-DT	63631-00	TFCC-4ML-DT	63633-00	TFCC-6ML-DT
Stationary Steel Base, Vac Assist Pump	64976-00	TFCC-3ML-VAC-S	64974-00	TFCC-4ML-VAC-S	64975-00	TFCC-6ML-VAC-S
Utility Trailer, Vac-Assist Pump System	64976-10	TFCC-3ML-VAC-UT	64974-10	TFCC-4ML-VAC-UT	64975-10	TFCC-6ML-VAC-UT
DOT Highway Trailer, Vac-Assist Pump	64976-20	TFCC-3ML-VAC-DT	64974-20	TFCC-4ML-VAC-DT	64975-20	TFCC-6ML-VAC-DT

Spare Parts/Add-On Accessories						
Mechanical Seal Assembly	63388-02	TFCC-3ML	63388-02	TFCC-4ML	63388-02	TFCC-6ML
Gasket Kit	62645-00	TFCC-3ML	62646-00	TFCC-4ML	62647-00	TFCC-6ML
Flapper Suction Check Valve Assy, EPDM	61208-00	TFCC-3ML	61415-00	TFCC-4ML	62508-00	TFCC-6ML
Rotating Assembly	61204-00	TFCC-3ML	62927-00	TFCC-4ML	62505-00	TFCC-6ML
Sound Attenuated Enclosure (70dba/30 ft)	63662-00	TFCC-3ML	63663-00	TFCC-4ML	63664-00	TFCC-6ML
Hose, Non-Collapsible Black EPDM, 25 ft c/w C & KC	63609-00	TFCC-3ML	62034-00	TFCC-4ML	51308-00	TFCC-6ML
Hose, Discharge Brown Lay flat, 50 ft c/w C & E	63613-00	TFCC-3ML	63614-00	TFCC-4ML	63615-00	TFCC-6ML
Strainer, Sq. Hole (Solids), FNPT	31345-00	TFCC-3ML	31760-00	TFCC-4ML	61085-00	TFCC-6ML

*** Optional Diesel Engine and Control Panel Manufacturers available. Including John deere diesel engines, Kubota, Caterpillar and more.

TFCC-M - Severe Duty



- 3", 4" or 6" connections available
- Severe duty rated for municipal or industrial applications
- Up to 78 hp engines available

Performance Range	TFCC-3M	TFCC-4M	TFCC-6M
Connection Size	3" x 3" ANSI	4" x 4" ANSI	6" X 6" ANSI
Connection Type:	Male Camlock	Male Camlock	Male Camlock
Max. Capacity	460 GPM (29 l/s)	740 GPM (46.7 l/s)	1500 GPM (94.6 l/s)
Max. Head	110 ft (33 m)	115 ft (35 m)	115 ft (35 m)
Max. Operating Pressure	86 psi (593 kPa)	90 psi (620 kPa)	80 psi (551 kPa)
Max. Suction Lift	25 ft (7.62 m)	25 ft (7.62 m)	25 ft (7.62 m)
Max. Temp.	160°F (71°C)	160°F (71°C)	160°F (71°C)
Max. Solids (inches)	2 1/2" (63 mm)	3" (76.2 mm)	3" (76.2 mm)
Diesel Engine Specifications (Std)	57 HP Deutz D914L03 Flex Tier 4i, Air-Cooled, 12V Starter, Exhaust Silencer	57 HP Deutz D914L03 Flex Tier 4i, Air-Cooled, 12V Starter, Exhaust Silencer	78 HP Deutz D914L04 Flex Tier 4i, Air-Cooled, 12V Starter, Exhaust Silencer

Engine Control Panel Spec

Automatic Preheat, key switch, oil pressure gauge, fluid temp gauge, voltmeter, hour meter, tachometer

Fuel Tank Capacity

Std. 40USG (Optional: 100 USG)

Mounting	Part#	Model	Model	Model
Stationary Steel Base	63382-10	TFCC-3M-S	TFCC-4M-S	TFCC-6M-S
Utility Trailer	63382-00	TFCC-3M-UT	TFCC-4M-UT	TFCC-6M-UT
DOT Highway Trailer	63382-20	TFCC-3M-DT	TFCC-4M-DT	TFCC-6M-DT

SPARE PARTS/ADD-ON ACCESSORIES:	TFCC-3M	TFCC-4M	TFCC-6M
Mechanical Seal Assembly	63388-02	63388-02	63388-02
Gasket Kit	62645-00	62646-00	62647-00
Flapper Suction Check Valve Assy, EPDM	61208-00	61415-00	62508-00
Rotating Assembly	61204-00	62927-00	62505-00
Sound Attenuated Enclosure (70dba/30 ft)	63662-00	63663-00	63664-00
Vacuum Prime Assist System	63395-00	63395-00	63395-00
Hose, Non-Collapsible Black EPDM, 25 ft c/w C & KC	63609-00	62034-00	51308-00
Hose, Discharge Brown Lay flat, 50 ft c/w C & E	63613-00	63614-00	63615-00
Strainer, Sq. Hole (Solids), FNPT	31345-00	31760-00	61085-00

Wastecorp Trash Flow® TFCC-8M™ Series



Need More Suction Power?
Select the vacuum prime assist option when ordering your pump.

Performance Range

Connection size	8" x 8" (203 mm x 203 mm)
Max. capacity	2700 GPM (613 m ³ /hr)
Max. head	110 ft (33 m)
Max. suction lift	25 ft. (7.62 m)
Max. temp.	160°F (71°C)
Max. solids (in)	3" (76.2 mm)
Max. operating pressure	83 psi (572 kPa)
Engine	83 hp Deutz D914L06, air-cooled diesel engine c/w muffler, control panel, 12V starter & alternator, battery
Fuel tank capacity	150 gallons

Materials of Construction

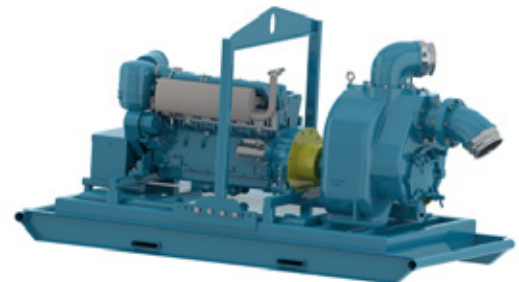
Pump casing	Standard cast iron (A48CL30), Optional: 316 SS, 304 SS, ADI, Hastelloy C276, CD4MCU
Impeller	Max. 14.75" OD, Ductile Iron ASTM A536, Grade 60-40-18 Semi-Open Type, Two-Vane Impeller, (2 plane, computer dynamically balanced)
Wear Plate (replaceable)	Standard, SAE1020 steel
Cover Plate (removable)	Standard cast iron, A48CL30
Bearing /Seal Cavity Lubrication	SAE no. 30 oil
Seal Plate	Standard cast iron, A48CL30
Flapper Valve	EPDM (optional Viton available)
Shaft Sleeve	316 stainless steel
Impeller Shaft	AISI 4140, high tensile steel
Mechanical Seal	Component type seal, Viton secondary seals, tungsten carbide primary rings, SS metal parts, tungsten carbide mating rings & SS springs

TFCC-8M™ Series Model Selection

Model	Part no.
TFCC-8M trailer mounted (DOT trailer)	63385-00
TFCC-8M skid mounted diesel	63385-10

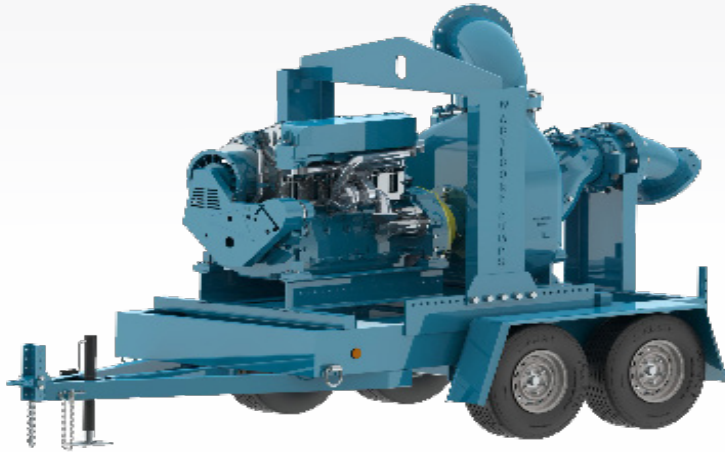
Options/Accessories

Description	Part no.
Vacuum prime assist	63395-00
Hose, non-collapsible BLK, EPDM rubber, 8"x25 ft. with hose fittings	63610-00
Hose, discharge, BLK rubber, 8"x50 ft	63618-00
Sound attenuated enclosure (70 dba/30 ft)	63665-00
Mechanical seal assembly	62413-00
Gasket kit	62648-00
Flapper check valve assembly	62421-00



Shown: TFCC-8M skid mounted model with lifting bail.

Wastecorp Trash Flow® TFCC-10M™ Series



Performance Range

Connection size	10" x 10" (250mm x 250mm)
Max. capacity	3200 GPM (726 m³/hr)
Max. head	131 ft (40m)
Max. suction lift	22 ft (6.70m)
Max. temp.	160°F (71°C)
Max. solids (in)	3" (76.2 mm)
Max. operating pressure	99 psi (683kPa)
Engine	148HP Deutz TCD914L06, 6-cylinder, air-cooled diesel engine c/w muffler, control panel, 12V starter & alternator, battery
Fuel tank capacity	150 gallons

Materials of Construction

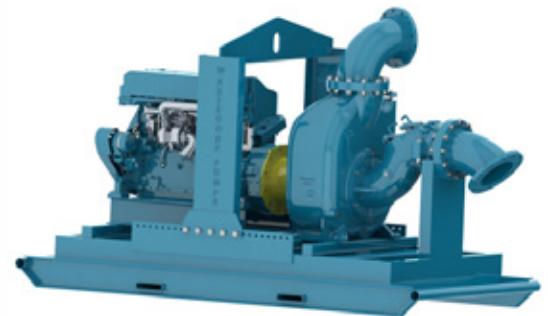
Pump casing	Standard cast iron (A48CL30), optional 316 SS, 304 SS, ADI, Hastelloy C276, CD4MCU
Impeller	Max. 14.75" OD, Ductile Iron ASTM A536, Grade 60-40-18 Semi-Open Type, Two-Vane Impeller, (2 plane, computer dynamically balanced)
Wear Plate (replaceable)	Standard, SAE1020 steel
Cover Plate (removable)	Standard cast iron, ASTM A48CL30
Bearing /Seal Cavity Lubrication	SAE no. 30 oil
Seal Plate	Standard cast iron, ASTM A48CL30
Flapper Valve	EPDM (optional Viton available)
Shaft Sleeve	316 stainless steel
Impeller Shaft	AISI 4140, high tensile steel

TFCC-10M™ Series Model Selection

Model	Part no.
TFCC-10M trailer mounted (DOT trailer)	63386-00
TFCC-10M skid mounted diesel	63386-10

Options/Accessories

Description	Part no.
Vacuum prime assist	63395-00
Hose, non-collapsible BLK, EPDM rubber, 10"x25 ft. with hose connections	63611-00
Hose, discharge, BLK rubber, 10"x50 ft	63617-00
Sound attenuated enclosure (70 dba/30 ft)	63666-00
Mechanical seal assembly	62413-99
Gasket kit	64292-00
Flapper check valve assembly	63376-00



Shown: TFCC-10M skid mounted model with lifting bail.

Wastecorp Trash Flow® TFCC-12M™ Series



Performance Range

Connection size	12" x 12" (300mm x 300mm)
Max. capacity	5500 GPM (1249 m³/hr)
Max. head	140 ft (42 m)
Max. suction lift	16 ft (4.87 m)
Max. temp.	160°F (71°C)
Max. solids (in)	3" (76.2 mm)
Max. operating pressure	80 psi (551kPa)

Engine	148HP Deutz TCD914L06, 6-cylinder, air-cooled diesel engine c/w muffler, control panel, 12V starter & alternator, battery
--------	---

Materials of Construction

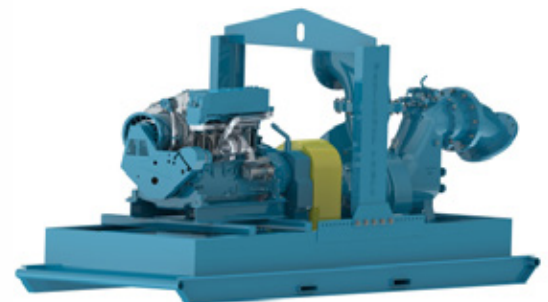
Pump casing	Standard cast iron (A48CL30), optional 316 SS, 304 SS, ADI, Hastelloy C276, CD4MCU
Impeller	Max. 18" OD, Ductile Iron ASTM A536, Grade 60-40-18 Semi-Open Type, Two-Vane Impeller, (2 plane, computer dynamically balanced)
Wear Plate (replaceable)	Standard, SAE1020 steel
Cover Plate (removable)	Standard cast iron, ASTM A48CL30
Bearing /Seal Cavity Lubrication	SAE no. 30 oil
Seal Plate	Standard cast iron, ASTM A48CL30
Flapper Valve	EPDM (optional Viton available)
Shaft Sleeve	316 stainless steel
Impeller Shaft	AISI 4140 , high tensile steel

TFCC-12M™ Series Model Selection

Model	Part no.
TFCC-12M trailer mounted (DOT trailer)	63387-00
TFCC-12M skid mounted diesel	63387-10

Options/Accessories

Description	Part no.
Vacuum prime assist	63395-00
Hose, non-collapsible BLK, EPDM rubber, 12"x25 ft. with hose fittings	63612-00
Hose, discharge, BLK rubber, 12"x50 ft	63618-00
Sound attenuated enclosure (70 dba/30 ft)	63667-00
Mechanical seal assembly	63381-00
Gasket kit	65179-00
Flapper check valve assembly	63380-00



Shown: TFCC-12M skid mounted model with lifting bail.

PUBLIC WORKS AND INDUSTRIAL PUMPS

The Trash Flow skid mounted engine driven trash pump product line features premium components like lifting bails, Deutz diesel engines - all from an ISO 9001 trash pump manufacturer.



Wastecorp Trash Flow® Lift Stations

LIFT STATIONS FOR THE ULTIMATE PACKAGED PUMPING SOLUTION.

Wastecorp Pumps provides a complete line of pre-engineered packaged pump stations for any type of water and wastewater lift application. Select from above ground, below ground and auto-start pump stations. The Wastecorp Trash Flow provides a patented shimless adjustable wear plate carrier which comes standard on every pump station. For many municipal or industrial applications, a packaged and factory engineered lift station or booster station is the best choice. Each factory built station can be housed in a corrosion and mildew resistant fiberglass case that offers an easy lift off canopy design and large access hinged door for easy maintenance, cleaning and repair.



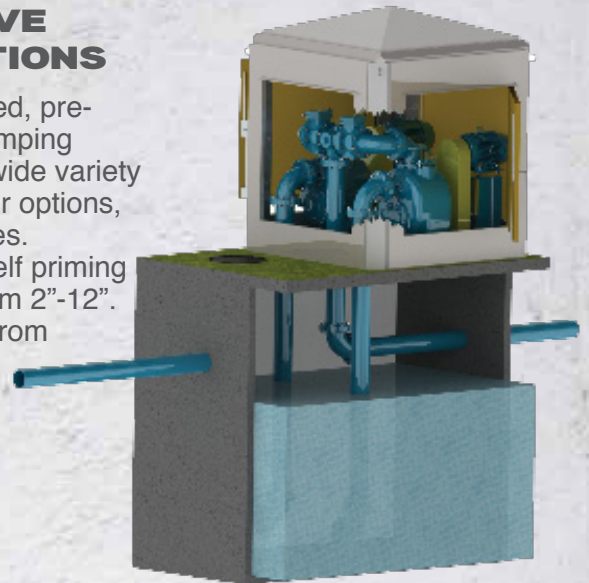
TRASH FLOW BELOW GROUND LIFT STATIONS

A below ground lift station is a type of pump system buried below ground in residential areas to transfer wastewater and municipal sewage.

The pumps that transfer the wastewater are trash pumps enclosed in a mildew resistant container called an enclosure. There are various controls built in to the pump system to control pressure and provide warnings to public works officials of too much pressure or other trouble with the equipment.

TRASH FLOW ABOVE GROUND LIFT STATIONS

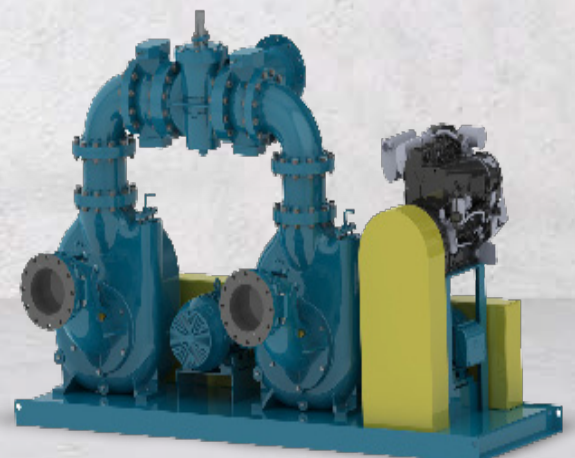
Wastecorp's factory assembled, pre-engineered above ground pumping stations are available with a wide variety of piping configurations, motor options, control panels and accessories. You select your Trash Flow self priming centrifugal pumps ranging from 2"-12". Configurations are available from duplex or triplex designs.



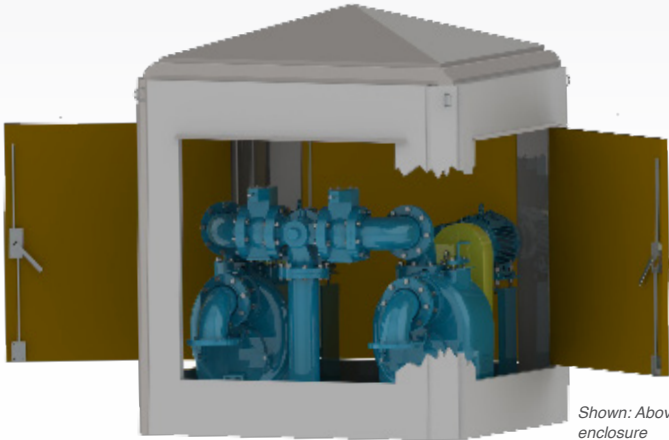
TRASH FLOW AUTO START LIFT STATIONS

Auto-start lift stations are designed with DC controls and a standby engine to provide pumping service during power outages. The entire package includes control panels, engines and of course your choice of genuine Trash Flow® 3", 4", 6", 8", 10" or 12" pump sizes.

For higher flow applications, triplex or quadruplex pump configurations are available. Wastecorp engineering staff is able to assist in design and implementation of your pump system.



Trash Flow® Above Ground Lift Stations



Shown: Above ground lift station with enclosure

Specifications

Available connection sizes :	2", 3", 4", 6", 8", 10", 12"
Max. capacity:	6300 GPM (397 lps)
Max. head:	150' (46 m)
Max. temp.:	160°F (71°C)
Max. solids (in):	3" (76.2 mm)
Voltage:	115 V 1P
	460 V 3P
	575 V 3P

Trash Flow® Pumps

- 2"-12" connection sizes available
- Each pump capable of 260-5500 GPM (model dependant)
- Municipal and industrial wastewater handling
- Select from duplex-triplex pump arrangements
- Adjustable wear plate carrier
- High head pump models available

Controls

- NEMA rated controls with several custom warning system options available
- Options include adjustable pressure control, circuit breakers and overload reset systems
- UL. and CSA listed (Contact factory for details)
- Control panels/connections are clearly labelled for contractor installation

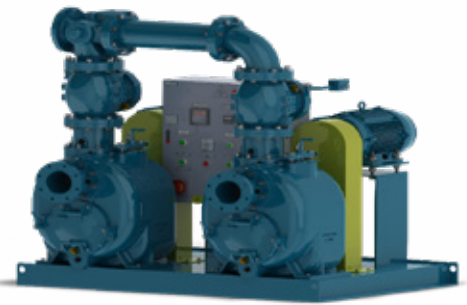
Optional Enclosure

- High density fiberglass material w/ specialized coating for weather resistance
- Customize enclosure with as many (or as few) access panels as you require
- Large entry door available
- Three colors choices available

Warranty

- Several warranty options available for pumps, controls and optional enclosure

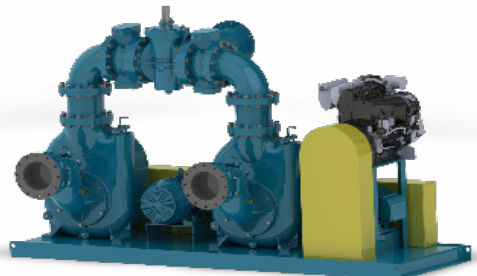
Trash Flow Above Ground Lift Station Options



Standard Configuration



Piggy Back



Auto-start Modular Lift Stations

Trash Flow® Below Ground Lift Stations



Shown: Below ground lift station with two pump configuration (piggy back)

Specifications

Available connection sizes :	2", 3", 4", 6", 8", 10", 12"
Max. capacity:	6300 GPM (397 lps)
Max. head:	150' (46 m)
Max. temp.:	160°F (71°C)
Max. solids (in):	3" (76.2 mm)
Voltage:	200 V 3 phase, 230V Single phase, 230V 3 phase, 460V 3 phase

Trash Flow® Pumps

- 2"-12" connection sizes available
- Each pump capable of 260-5500 GPM (model dependant)
- Municipal and industrial wastewater handling
- Select from duplex-triplex pump arrangements
- Adjustable wear plate carrier
- No need for elevators or platforms

Controls

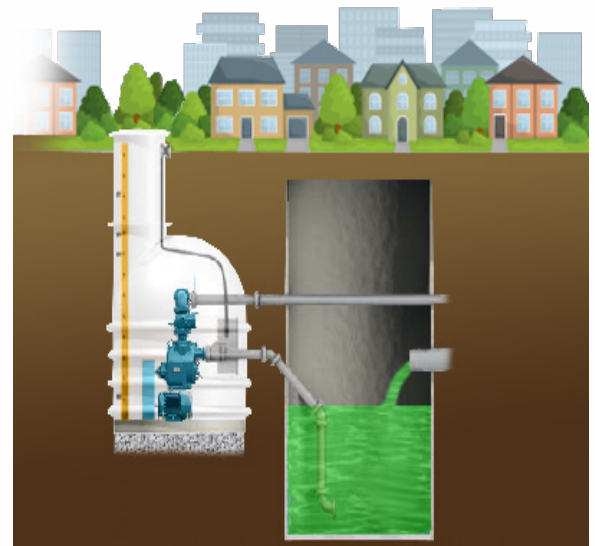
- NEMA rated controls with several custom warning system options available
- Options include adjustable pressure control, circuit breakers and overload reset systems
- U.L. and CSA listed (Contact factory for details)
- Control panels/connections are clearly labelled for contractor installation

Optional Enclosure

- Designed to withstand mold, fungus, mildew
- Customize your enclosure
- Manhole opening can be locked for added security
- Select from three color options

Warranty

- Several warranty options available for pumps, controls and optional enclosure



Shown: TFCC-6ML skid mounted model with lifting bail.

Trash Flow® Water Hog® Contractor Trash Pumps

WATER HOG® - THE ULTIMATE CONTRACTOR STYLE TRASH PUMP

The Trash-Flow TFX commercial trash pump product line is designed for most commercial, residential, and industrial applications. Trash-Flow TFX pumps feature a light weight design with capacities to 425 GPM (27 lps). TFX pumps are engineered for dewatering, flood control, clear water, construction sites, swimming pool draining and most multipurpose pumping applications.

TRASH FLOW TFX BENEFITS

- 1 year commercial warranty (pump)
- 3 year engine warranty†
- Low emissions engines
- Vibration dampening feet
- Cast iron impeller
- Carbon, ceramic mechanical seals
- Worldwide service centers.



GAS OR DIESEL TFX CONTRACTOR TRASH PUMPS

All engine driven pump models are available with gas or diesel engines. Heavy duty wheel kits are available for all models as well. All wheel kits are designed for easy maneuverability around your work site.

DIESEL



GAS



† Engine warranty available through engine manufacturer

WATER HOG® TFX-2MHD TRASH PUMPS

Performance Range

Connection size	2"
Connection thread	NPT Male
Max. flow rate	174 GPM
Max. suction lift	26 ft.
Max. temp.	160°F (71°C)
Max. solids (in)	1"
Max. discharge head	109 ft.
Approx dimensions	23x16x18
Approx. weight	90 lbs

Engine

Engine model	Honda gas or Kohler diesel
Power	6.1 hp (diesel)
Fuel type	Gas or diesel
Fuel tank capacity	4.3 qts
Continuous run time	Two hours
Start	Recoil (manual)



- Cast iron impeller, 2-Vane open design with wide solids passage
- Cast iron impeller housing
- Sand-cast aluminum pump housing, easily removed by 4 disconnect handles
- Steel pump wear plate, steel, tool-free replacement
- Rugged 1" diameter steel pump roll cage
- Four(4) rubber isolator feet, pump vibration isolation

WATER HOG® TFX-3MHD TRASH PUMPS

Performance Range

Connection size	3"
Connection thread	NPT Male
Max. flow rate	328 GPM
Max. suction lift	26 ft.
Max. temp.	160°F (71°C)
Max. solids (in)	1"
Max. discharge head	93 ft.
Approx dimensions	29x21x21
Approx. weight	170 lbs

Engine

Engine model	Honda gas or Kohler diesel
Power	9.1 hp (diesel)
Fuel type	Gas or diesel
Fuel tank capacity	5 qts
Continuous run time	Two hours
Start	Recoil (manual)



- Cast iron impeller, 2-Vane open design with wide solids passage
- Cast iron impeller housing
- Sand-cast aluminum pump housing, easily removed by 4 disconnect handles
- Steel pump wear plate, steel, tool-free replacement
- Rugged 1" diameter steel pump roll cage
- Four(4) rubber isolator feet, pump vibration isolation

North America: 1-888-829-2783

Fax: 1-888-883-3320

Worldwide: +1-201-445-2882

Fax: +1-201-445-3252

E-mail: info@wastecorp.com

Internet: www.wastecorp.com

THE ULTIMATE TRASH PUMP FOR MUNICIPAL OR INDUSTRIAL USE.

Wastecorp Trash Flow self priming centrifugal pump products are ideal for a multitude of municipal and industrial solids handling applications. The Trash Flow is available in 2", 3", 4", 6", 8", 10", 12" sizes with maximum capacity to 6500 GPM. Choose from standard cast iron models or stainless steel and engine driven mobile pump models for outdoor applications.



WASTECORP.
Pumps[®]

Specifications, literature and illustrative material in this trash pump brochure are accurate at the time of publication but are subject to change without notice. Illustrations may include optional equipment and accessories and may not include all standard equipment. Wastecorp and globes are trademarks of WPI/Wastecorp Pumps. Wastecorp Pumps is the exclusive manufacturer of these brands worldwide under license. Marks are protected in North America and worldwide.

© 2019 V1 WPI. All rights reserved. New York, NY 10024.
NYC/West85 Djs 01/19. Litho in the United States of America.
For a complete engineering specification contact Wastecorp Pumps at 1.888.829.2783 or by E-mail: info@wastecorp.com.

Also on the web at <http://www.wastecorp.com> Wastecorp is not affiliated with the companies listed above. Names used for reference purposes only. All trademarks are the property of their respective owners.