

Line

VTI

"Vertical Pumps
with Long Axis"



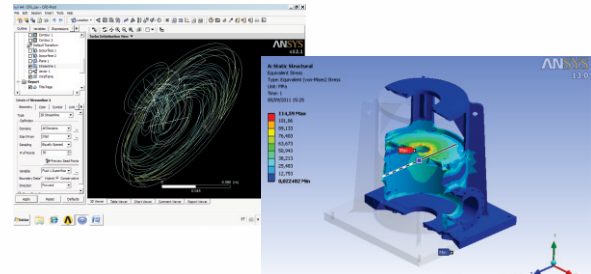
IMBIL®

Soluções em Bombeamento



INNOVATING IN PURSUIT OF EXCELLENCE

IMBIL provides the market of centrifugal pumps a new line of products with vertical pumps type multi-stage turbine, vertical pumps with axial and semi-axial rotors, and vertical turbine pumps with double suction impeller which can be assembled with multiple stages.

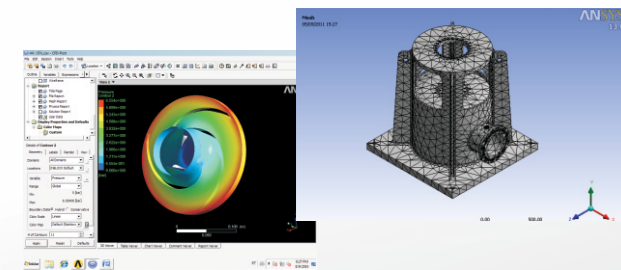


Product developed using CFD, Static Structural, and finite element. Product technology and manufacturing are completely national. Currently this new product line can be provided with up to six different sizes and stages of suction, discharge and column.

- Lower installation cost due to the reduced cost of the pump house.

Applications:

Water Treatment and Intake flow
Sanitation
Deep Welling
Drainage
Irrigation
Oil Transfer

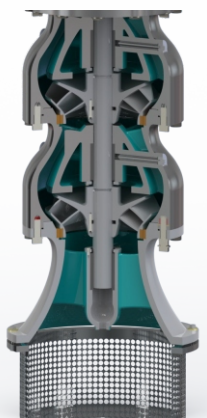
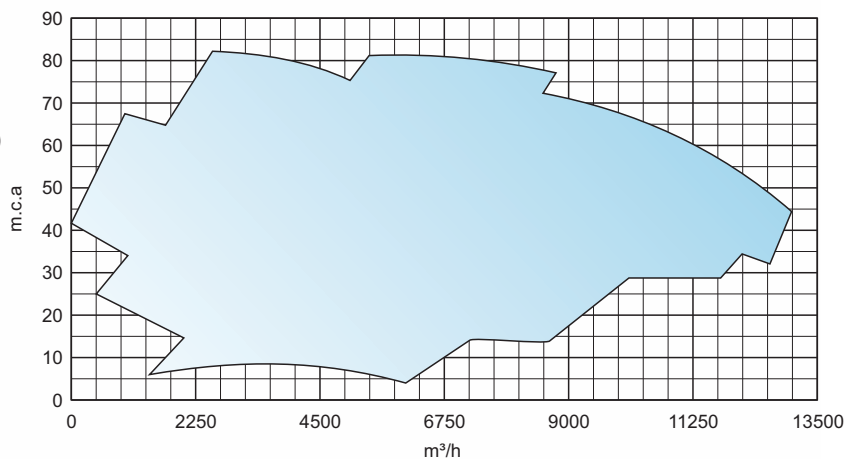


Vertical Turbine Pump VTi

Features:

Flow up to 13,000 m³ / h
Height Gage up to 80 m.c.a. (per stage)
Temperature: 0 to 90 degrees Celsius

Vertical Turbine Pump
Lower cost with private pumps
No need for priming



Project:

Axial pump with multi-stage turbine may be provided with tank can; several provisions of the discharge pipe with varied designs and head specifications according to the code ASME VIII.

Available with mechanical seals and spacers for mounting.

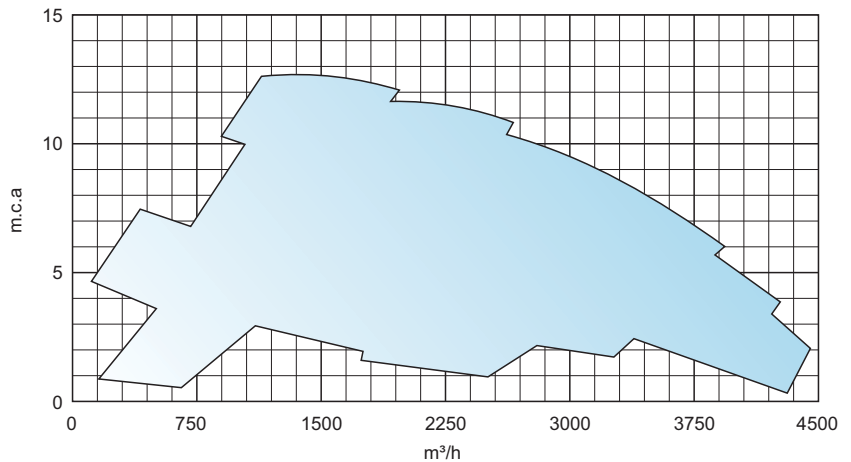


Vertical Pump Type Axial VTA

Features:

Flow up to 4,200 m³ / h
Gage height up to 12 m.c.a. (per stage)
Temperature: 0 to 90 degrees Celsius

Vertical Pump Axial Type
Lower cost with private pumps
No need for priming



Project:

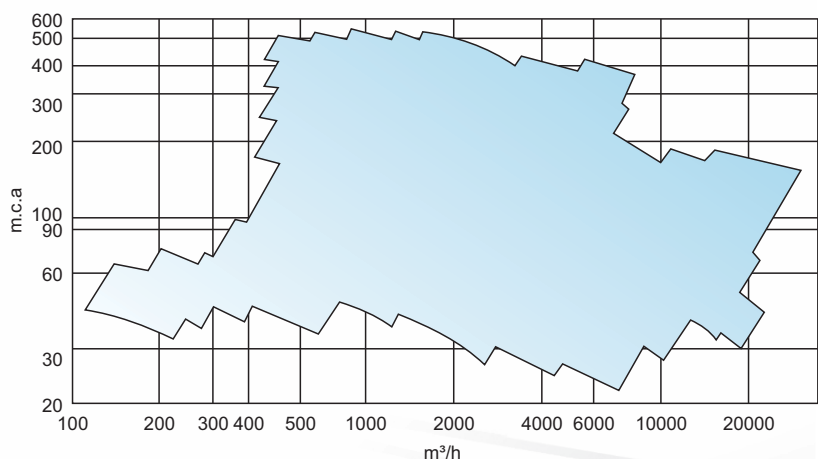
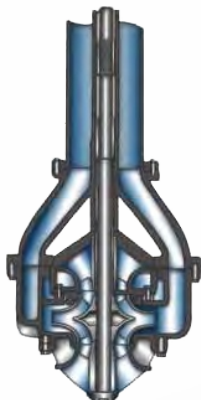
Vertical pump with extended shaft up to two-stage rotor axial and semi-axial, with radial bearings lubricated by the pumped fluid itself. Designed to operate under severe conditions of service, aiming to maximum pump availability.

Vertical Pump Turbine Type VTD (Double Suction)

Features:

Flow up to 20,000 m³ / h
Gage height up to 610 m.c.a.
Temperature: -45 to 205 degrees Celsius

Vertical Pump Turbine Type -
Double Suction
Lower cost with private pumps
No need for priming



Project:

Vertical pump multi-stage with double suction impeller at the first stage, providing low axial thrust. The first stage of the symmetrical volute provides low thrust, with radial bearings enclosed in the first stage.

Pumps VTI

"Vertical Pumps
with Long Axis"



AREA 120.000M²

IMBIL - Pumping Solutions.

Acting in the Global Pump Market, IMBIL - Industry and Maintenance of Pumps ITA LLC, is located in the city of Itapira - São Paulo, covering an area of 120.000 square meters.

It has advanced technological resources, practices modern management and engineering techniques and stimulates a continuous development of skills, abilities and attitudes of employees.

The Quality Management System is certified to international standard ISO 9001 - 2000 by Bureau Veritas Certification.

Currently IMBIL accelerates the development of its Integrated Social and Environmental Management.

The Commercial, Administrative and Industrial functions are fully interconnected by Business Management software in a fiber optic and wireless network connecting more than one hundred stations.

Supported by two own foundries and model-making facilities, IMBIL is selfsufficient in the production of its castings, applying a wide range of materials, especially those resistant to abrasion and corrosion.

The Lean Manufacturing philosophy, that aims to reduce the time between order placement and shipment of the product, results not only in shorter lead times but also in greater flexibility.

We offer an adequate and personalized After Sales service, from support in the Start-Up phase to integral equipment maintenance, and yet, as per the Service Contract, operate Pumping Installations in the Sugar&Ethanol, Steel and Mining Industries and industrial plants in general.

All this human, technological and financial resources are driven by the IMBIL MISSION: "Providing Pumping Solutions and related services, attending the needs and expectations of its customers in the Global Market and respecting the ethical principles that govern its relations with employees, partners, environment and society".